

Cadherin 16 Rabbit mAb

Catalog No: #56386

Package Size: #56386-1 50ul #56386-2 100ul

Orders: order@signalwayantibody.com

Support: tech@signalwayantibody.com

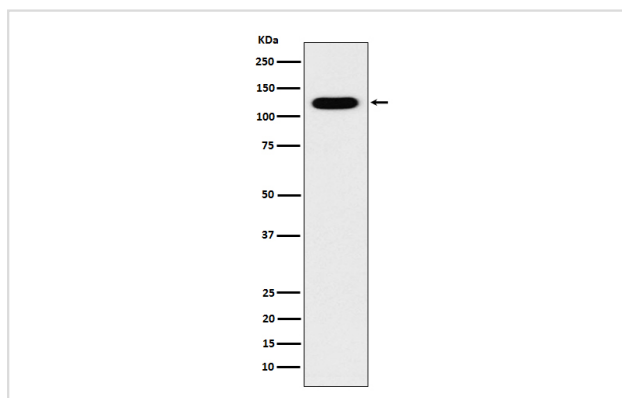
Description

Product Name	Cadherin 16 Rabbit mAb
Host Species	Rabbit
Clonality	Monoclonal
Isotype	Rabbit IgG
Purification	Affinity-chromatography
Applications	WB IHC IP
Species Reactivity	Human Mouse
Specificity	Cadherin 16 Antibody detects endogenous levels of total Cadherin 16
Immunogen Description	A synthesized peptide derived from human Cadherin 16
Other Names	Cadherin 16; Cadherin kidney; CDH16; Kidney cadherin; Ksp cadherin;
Accession No.	Uniprot:O75309
Uniprot	O75309
Calculated MW	120kDa
Formulation	Rabbit IgG in phosphate buffered saline , pH 7.4, 150mM NaCl, 0.02% sodium azide and 50% glycerol.
Storage	Store at +4Λ C short term. Store at -20Λ C long term. Avoid freeze / thaw cycle.

Application Details

WB:1:500~1:2000IHC:1:100~1:500IP:1:40

Images



Western blot analysis of Cadherin 16 expression in Human fetal kidney lysate.

Product Description

Cadherins are calcium dependent cell adhesion proteins. They preferentially interact with themselves in a homophilic manner in connecting cells; cadherins may thus contribute to the sorting of heterogeneous cell types.

Note: This product is for in vitro research use only