

HLA-Drb1 Rabbit mAb

Catalog No: #56390

Package Size: #56390-1 50ul #56390-2 100ul

Orders: order@signalwayantibody.com

Support: tech@signalwayantibody.com

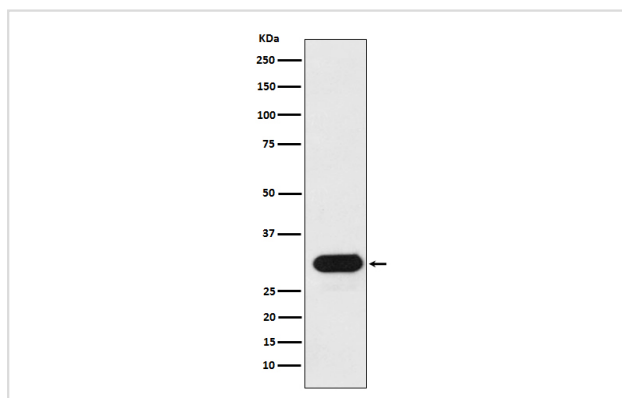
Description

Product Name	HLA-Drb1 Rabbit mAb
Host Species	Rabbit
Clonality	Monoclonal
Isotype	Rabbit IgG
Purification	Affinity-chromatography
Applications	WB IHC ICC/IF
Species Reactivity	Human
Specificity	HLA-Drb1 Antibody detects endogenous levels of total HLA-Drb1
Immunogen Description	A synthesized peptide derived from human HLA-Drb1
Other Names	HLA-Drb1; DW2.2/DR2.2;
Accession No.	Uniprot:P01911
Uniprot	P01911
Calculated MW	29kDa
Formulation	Rabbit IgG in phosphate buffered saline , pH 7.4, 150mM NaCl, 0.02% sodium azide and 50% glycerol.
Storage	Store at +4 Λ C short term. Store at -20 Λ C long term. Avoid freeze / thaw cycle.

Application Details

WB:1:500~1:2000IHC:1:50~1:200ICC/IF:1:50~1:200

Images



Western blot analysis of HLA-Drb1 expression in Ramos cell lysate.

Product Description

Binds peptides derived from antigens that access the endocytic route of antigen presenting cells (APC) and presents them on the cell surface for recognition by the CD4 T-cells.

Note: This product is for in vitro research use only