

CD25 Rabbit mAb

Catalog No: #56392

Package Size: #56392-1 50ul #56392-2 100ul

Orders: order@signalwayantibody.com

Support: tech@signalwayantibody.com

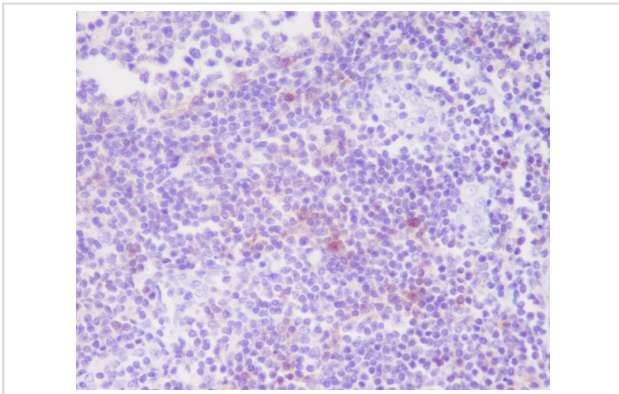
Description

| | |
|-----------------------|--|
| Product Name | CD25 Rabbit mAb |
| Host Species | Rabbit |
| Clonality | Monoclonal |
| Isotype | Rabbit IgG |
| Purification | Affinity-chromatography |
| Applications | IHC ICC/IF |
| Species Reactivity | Human |
| Specificity | CD25 Antibody detects endogenous levels of total CD25 |
| Immunogen Description | A synthesized peptide derived from human CD25 |
| Other Names | CD25; IDDM10; IL-2-RA; IL2 RA; IL2R; IL2RA; IMD4; p55; TAC; TCGFR; |
| Accession No. | Uniprot:P01589 |
| Uniprot | P01589 |
| Calculated MW | kDa |
| Formulation | Rabbit IgG in phosphate buffered saline , pH 7.4, 150mM NaCl, 0.02% sodium azide and 50% glycerol. |
| Storage | Store at -20°C for long term preservation (recommended). Store at 4°C for short term use. |

Application Details

IHC:1:50~1:200 ICC/IF:1:50~1:200

Images



Immunohistochemical analysis of paraffin-embedded human tonsil, using CD25 Antibody.

Product Description

Receptor for interleukin-2.

Note: This product is for in vitro research use only