

PODXL Rabbit mAb

Catalog No: #56396

Package Size: #56396-1 50ul #56396-2 100ul

Orders: order@signalwayantibody.com

Support: tech@signalwayantibody.com

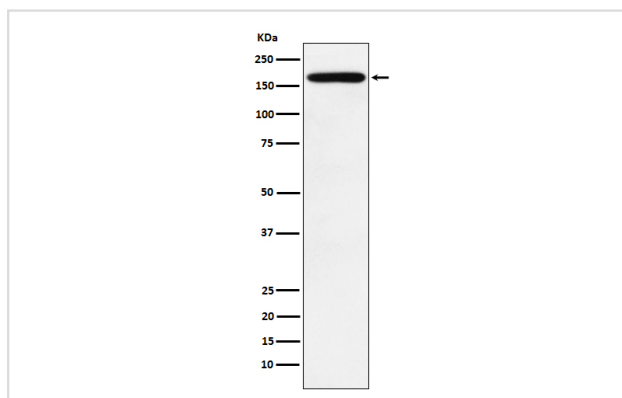
Description

Product Name	PODXL Rabbit mAb
Host Species	Rabbit
Clonality	Monoclonal
Isotype	Rabbit IgG
Purification	Affinity-chromatography
Applications	WB IHC ICC/IF IP FC
Species Reactivity	Human
Specificity	PODXL Antibody detects endogenous levels of total PODXL
Immunogen Description	A synthesized peptide derived from human PODXL
Other Names	Gp2; Gp200; PC; PCLP; PCLP1; Pcx; Podocalyxin; Podocalyxin like; Podocalyxin-like protein 1; Podxl;
Accession No.	Uniprot:O00592
Uniprot	O00592
Calculated MW	165kDa
Formulation	Rabbit IgG in phosphate buffered saline , pH 7.4, 150mM NaCl, 0.02% sodium azide and 50% glycerol.
Storage	Store at +4 Λ C short term. Store at -20 Λ C long term. Avoid freeze / thaw cycle.

Application Details

WB:1:500~1:2000IHC:1:50~1:200ICC/IF:1:100~1:500IP:1:50FC:1:100

Images



Western blot analysis of PODXL expression in HeLa cell lysate.

Product Description

Involved in the regulation of both adhesion and cell morphology and cancer progression. Function as an anti-adhesive molecule that maintains an open filtration pathway between neighboring foot processes in the podocyte by charge repulsion.

Note: This product is for in vitro research use only