

FSH beta $\alpha\Omega\frac{1}{2}\alpha\Omega\frac{1}{2}$ FSHBo $\Omega\frac{1}{2}\alpha\Omega\frac{1}{2}$ Rabbit mAb

Catalog No: #56398

Package Size: #56398-1 50ul #56398-2 100ul

Orders: order@signalwayantibody.com

Support: tech@signalwayantibody.com

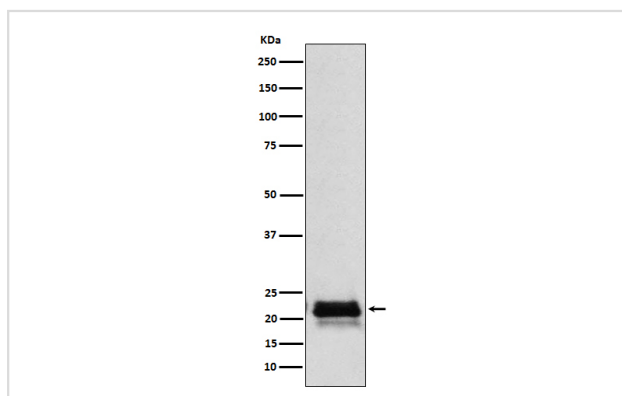
Description

Product Name	FSH beta $\alpha\Omega\frac{1}{2}\alpha\Omega\frac{1}{2}$ FSHBo $\Omega\frac{1}{2}\alpha\Omega\frac{1}{2}$ Rabbit mAb
Host Species	Rabbit
Clonality	Monoclonal
Isotype	Rabbit IgG
Purification	Affinity-chromatography
Applications	WB IP
Species Reactivity	Human Rabbit
Specificity	FSH beta $\alpha\Omega\frac{1}{2}\alpha\Omega\frac{1}{2}$ FSHBo $\Omega\frac{1}{2}\alpha\Omega\frac{1}{2}$ Antibody detects endogenous levels of total FSH beta $\alpha\Omega\frac{1}{2}\alpha\Omega\frac{1}{2}$ FSHBo $\Omega\frac{1}{2}\alpha\Omega\frac{1}{2}$
Immunogen Description	A synthesized peptide derived from human FSH beta $\alpha\Omega\frac{1}{2}\alpha\Omega\frac{1}{2}$ FSHBo $\Omega\frac{1}{2}\alpha\Omega\frac{1}{2}$
Other Names	Follicle Stimulating Hormon; Follitropin beta chain; Follitropin subunit beta; FSHB; FSHbeta;
Accession No.	Uniprot:P01225
Uniprot	P01225
Calculated MW	22kDa
Formulation	Rabbit IgG in phosphate buffered saline , pH 7.4, 150mM NaCl, 0.02% sodium azide and 50% glycerol.
Storage	Store at +4 Λ C short term. Store at -20 Λ C long term. Avoid freeze / thaw cycle.

Application Details

WB:1:500~1:2000IP:1:50

Images



Western blot analysis of FSH beta (FSHB) expression in Human pituitary lysate.

Product Description

Follicle stimulating hormone enables ovarian folliculogenesis to the antral follicle stage and is essential for Sertoli cell proliferation and maintenance of sperm quality in the testis.

Note: This product is for in vitro research use only