

## TFE3 Rabbit mAb

Catalog No: #56400

Package Size: #56400-1 50ul #56400-2 100ul

Orders: order@signalwayantibody.com

Support: tech@signalwayantibody.com

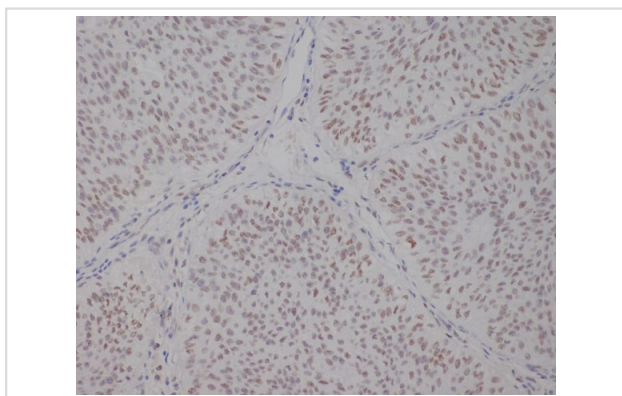
## Description

Product Name	TFE3 Rabbit mAb
Host Species	Rabbit
Clonality	Monoclonal
Isotype	Rabbit IgG
Purification	Affinity-chromatography
Applications	IHC ICC/IF FC
Species Reactivity	Human
Specificity	TFE3 Antibody detects endogenous levels of total TFE3
Immunogen Description	A synthesized peptide derived from human TFE3
Other Names	bHLHe33; RCCP2; RCCX1; Tcfe3; Tfe3; TFEA;
Accession No.	Uniprot:P19532
Uniprot	P19532
Calculated MW	kDa
Storage	Rabbit IgG in phosphate buffered saline , pH 7.4, 150mM NaCl, 0.02% sodium azide and 50% glycerol. Store at +4°C short term. Store at -20°C long term. Avoid freeze / thaw cycle.

## Application Details

IHC:1:50~1:200 ICC/IF:1:50~1:100 FC:1:50

## Images



Immunohistochemical analysis of paraffin-embedded human bladder, using TFE3 Antibody.

## Product Description

Transcription factor that specifically recognizes and binds E-box sequences (3'-CANNTG-5'). Efficient DNA-binding requires dimerization with itself or with another MiT/TFE family member such as TFEB or MITF. In association with TFEB, activates the expression of CD40L in T-cells, thereby playing a role in T-cell-dependent antibody responses in activated CD4(+) T-cells and thymus-dependent humoral immunity.

---

Note: This product is for in vitro research use only