

ABHD5 Rabbit mAb

Catalog No: #56401

Package Size: #56401-1 50ul #56401-2 100ul

Orders: order@signalwayantibody.comSupport: tech@signalwayantibody.com

Description

Product Name	ABHD5 Rabbit mAb
Host Species	Rabbit
Clonality	Monoclonal
Isotype	Rabbit IgG
Purification	Affinity-chromatography
Applications	WB IHC FC
Species Reactivity	Human
Specificity	ABHD5 Antibody detects endogenous levels of total ABHD5
Immunogen Description	A synthesized peptide derived from human ABHD5
Other Names	ABHD5; Abhydrolase domain containing 5; CDS; CGI58; IECN2; NCIE2;
Accession No.	Uniprot:Q8WTS1
Uniprot	Q8WTS1
Calculated MW	45kDa
Formulation	Rabbit IgG in phosphate buffered saline , pH 7.4, 150mM NaCl, 0.02% sodium azide and 50% glycerol.
Storage	Store at +4Λ C short term. Store at -20Λ C long term. Avoid freeze / thaw cycle.

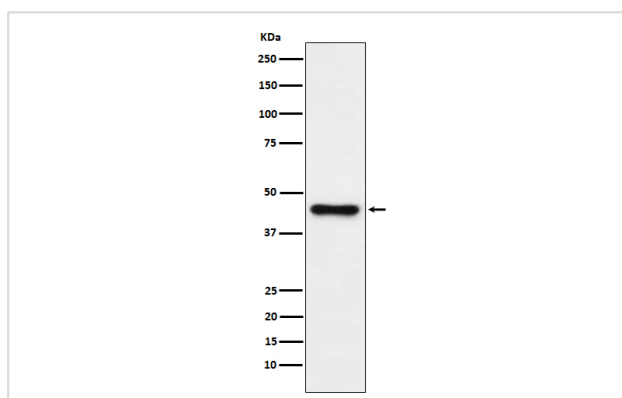
Application Details

WB: 1:500~1:2000

IHC: 1:100~1:500

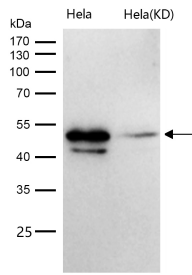
FC: 1:100

Images



Western blot analysis of ABHD5 expression in HepG2 cell lysate.

All lanes use the Antibody at 1:2K dilution for 1 hour at room temperature.



Product Description

Lysophosphatidic acid acyltransferase which functions in phosphatidic acid biosynthesis. May regulate the cellular storage of triacylglycerol through activation of the phospholipase PNPLA2. Involved in keratinocyte differentiation.

Note: This product is for in vitro research use only