

FDFT1 Rabbit mAb

Catalog No: #56407

Package Size: #56407-1 50ul #56407-2 100ul

Orders: order@signalwayantibody.com

Support: tech@signalwayantibody.com

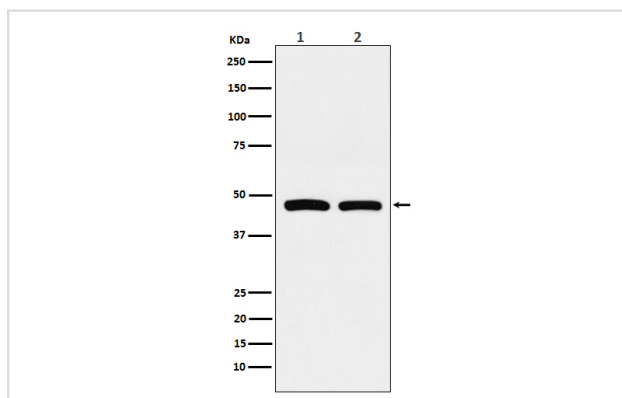
Description

Product Name	FDFT1 Rabbit mAb
Host Species	Rabbit
Clonality	Monoclonal
Isotype	Rabbit IgG
Purification	Affinity-chromatography
Applications	WB IHC ICC/IF IP
Species Reactivity	Human Mouse Rat
Specificity	FDFT1 Antibody detects endogenous levels of total FDFT1
Immunogen Description	A synthesized peptide derived from human FDFT1
Other Names	DGPT; ERG9; FDFT1; SQS; Squalene synthase; SS;
Accession No.	Uniprot:P37268
Uniprot	P37268
Calculated MW	48kDa
Formulation	Rabbit IgG in phosphate buffered saline , pH 7.4, 150mM NaCl, 0.02% sodium azide and 50% glycerol.
Storage	Store at +4 Λ C short term. Store at -20 Λ C long term. Avoid freeze / thaw cycle.

Application Details

WB:1:500~1:1000IHC:1:100~1:500ICC/IF:1:50~1:200IP:1:50

Images



Western blot analysis of FDFT1 expression in (1) HepG2 cell lysate; (2) RAW264.7 cell lysate.

Product Description

Critical branch point enzyme of isoprenoid biosynthesis that is thought to regulate the flux of isoprene intermediates through the sterol pathway.

Note: This product is for in vitro research use only