

## CRX Rabbit mAb

Catalog No: #56408

Package Size: #56408-1 50ul #56408-2 100ul

Orders: order@signalwayantibody.com

Support: tech@signalwayantibody.com

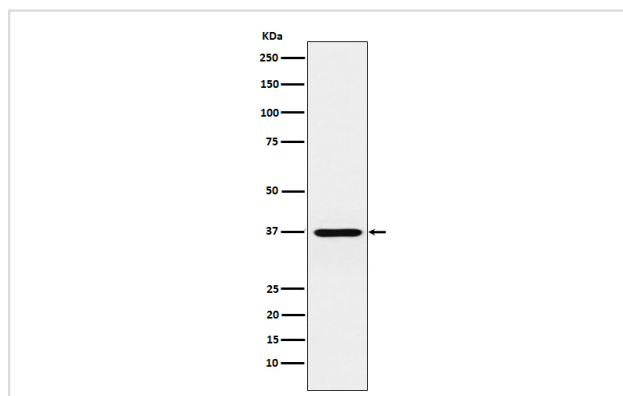
## Description

Product Name	CRX Rabbit mAb
Host Species	Rabbit
Clonality	Monoclonal
Isotype	Rabbit IgG
Purification	Affinity-chromatography
Applications	WB IHC
Species Reactivity	Human
Specificity	CRX Antibody detects endogenous levels of total CRX
Immunogen Description	A synthesized peptide derived from human CRX
Other Names	Cone rod homeobox; CORD 2; CRD; CRX; LCA7; OTX3;
Accession No.	Uniprot:O43186
Uniprot	O43186
Calculated MW	37kDa
Formulation	Rabbit IgG in phosphate buffered saline , pH 7.4, 150mM NaCl, 0.02% sodium azide and 50% glycerol.
Storage	Store at +4 $\Lambda$ C short term. Store at -20 $\Lambda$ C long term. Avoid freeze / thaw cycle.

## Application Details

WB:1:500~1:2000IHC:1:50~1:200

## Images



Western blot analysis of CRX expression in Y79 cell lysate.

## Product Description

Binds and transactivates the sequence 5'-TAATC[CA]-3' which is found upstream of several photoreceptor-specific genes, including the opsin genes. Acts synergistically with other transcription factors, e.g. NRL and RX, to regulate photoreceptor cell-specific gene transcription. Essential for the maintenance of mammalian photoreceptors.

---

Note: This product is for in vitro research use only