

## Liver Carboxylesterase 1 Rabbit mAb

Catalog No: #56413

Package Size: #56413-1 50ul #56413-2 100ul

Orders: order@signalwayantibody.com

Support: tech@signalwayantibody.com

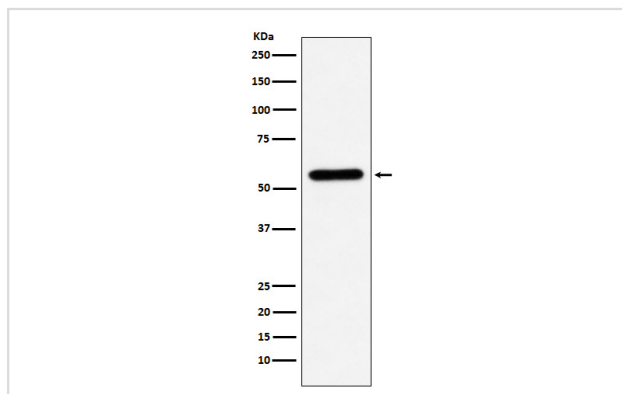
## Description

Product Name	Liver Carboxylesterase 1 Rabbit mAb
Host Species	Rabbit
Clonality	Monoclonal
Isotype	Rabbit IgG
Purification	Affinity-chromatography
Applications	WB IP FC
Species Reactivity	Human Mouse Rat
Specificity	Liver Carboxylesterase 1 Antibody detects endogenous levels of total Liver Carboxylesterase 1
Immunogen Description	A synthesized peptide derived from human Liver Carboxylesterase 1
Other Names	ACAT; CE 1; CEH; CES1; CES2; CESDD1; Egasyn; ES-HTEL; ES-x; Es22; Esterase 22; hCE 1; HMSE; HMSE1; REH; SES1; TGH; Triacylglycerol hydrolase;
Accession No.	Uniprot:P23141
Uniprot	P23141
Calculated MW	55kDa
Formulation	Rabbit IgG in phosphate buffered saline , pH 7.4, 150mM NaCl, 0.02% sodium azide and 50% glycerol.
Storage	Store at +4 $\Lambda$ C short term. Store at -20 $\Lambda$ C long term. Avoid freeze / thaw cycle.

## Application Details

WB:1:1000~1:5000IP:1:40FC:1:100

## Images



Western blot analysis of Liver Carboxylesterase 1 expression in U937 cell lysate.

## Product Description

Involved in the detoxification of xenobiotics and in the activation of ester and amide prodrugs. Hydrolyzes aromatic and aliphatic esters, but has no catalytic activity toward amides or a fatty acyl-CoA ester. Hydrolyzes the methyl ester group of cocaine to form benzoylecgonine.

---

Note: This product is for in vitro research use only