

## CYP24A1 Rabbit mAb

Catalog No: #56427

Package Size: #56427-1 50ul #56427-2 100ul

Orders: order@signalwayantibody.com

Support: tech@signalwayantibody.com

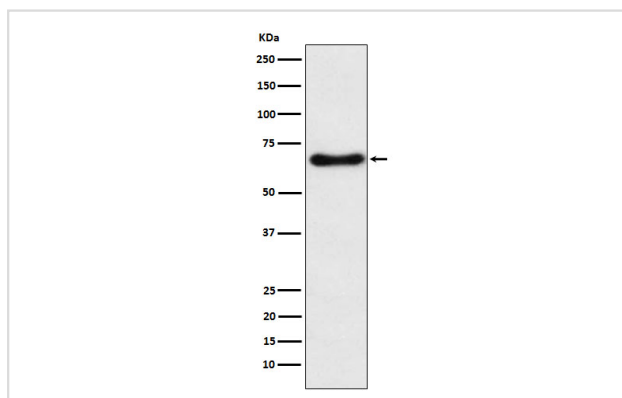
## Description

Product Name	CYP24A1 Rabbit mAb
Host Species	Rabbit
Clonality	Monoclonal
Isotype	Rabbit IgG
Purification	Affinity-chromatography
Applications	WB
Species Reactivity	Human
Specificity	CYP24A1 Antibody detects endogenous levels of total CYP24A1
Immunogen Description	A synthesized peptide derived from human CYP24A1
Other Names	CP24; CYP24; CYP24A1; HCAI; P450 CC24;
Accession No.	Uniprot:Q07973
Uniprot	Q07973
Calculated MW	59kDa
Formulation	Rabbit IgG in phosphate buffered saline , pH 7.4, 150mM NaCl, 0.02% sodium azide and 50% glycerol.
Storage	Store at +4Λ C short term. Store at -20Λ C long term. Avoid freeze / thaw cycle.

## Application Details

WB: 1:500~1:2000

## Images



Western blot analysis of CYP24A1 expression in Human fetal liver lysate.

## Product Description

Has a role in maintaining calcium homeostasis. Catalyzes the NADPH-dependent 24-hydroxylation of calcidiol (25-hydroxyvitamin D(3)) and calcitriol (1-alpha,25-dihydroxyvitamin D(3)).

---

Note: This product is for in vitro research use only