

Rab25 Rabbit mAb

Catalog No: #56430

Package Size: #56430-1 50ul #56430-2 100ul

Orders: order@signalwayantibody.com

Support: tech@signalwayantibody.com

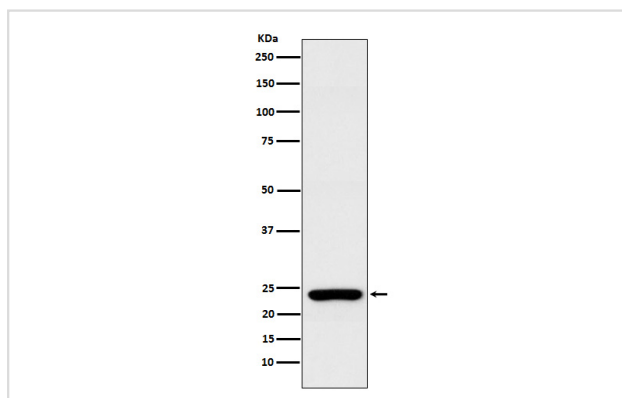
Description

Product Name	Rab25 Rabbit mAb
Host Species	Rabbit
Clonality	Monoclonal
Isotype	Rabbit IgG
Purification	Affinity-chromatography
Applications	WB
Species Reactivity	Human
Specificity	Rab25 Antibody detects endogenous levels of total Rab25
Immunogen Description	A synthesized peptide derived from human Rab25
Other Names	CATX8; RAB11C; RAB25;
Accession No.	Uniprot:P57735
Uniprot	P57735
Calculated MW	23kDa
Formulation	Rabbit IgG in phosphate buffered saline , pH 7.4, 150mM NaCl, 0.02% sodium azide and 50% glycerol.
Storage	Store at +4Λ C short term. Store at -20Λ C long term. Avoid freeze / thaw cycle.

Application Details

WB: 1:500~1:1000

Images



Western blot analysis of Rab25 expression in MCF7 cell lysate.

Product Description

Involved in the regulation of cell survival. Promotes invasive migration of cells in which it functions to localize and maintain integrin alpha-V/beta-1 at the tips of extending pseudopodia (PubMed:17925226). Involved in the regulation of epithelial morphogenesis through the control of CLDN4 expression and localization at tight junctions (By similarity).

Note: This product is for in vitro research use only