

GSTO1 Rabbit mAb

Catalog No: #56435

Package Size: #56435-1 50ul #56435-2 100ul

Orders: order@signalwayantibody.com

Support: tech@signalwayantibody.com

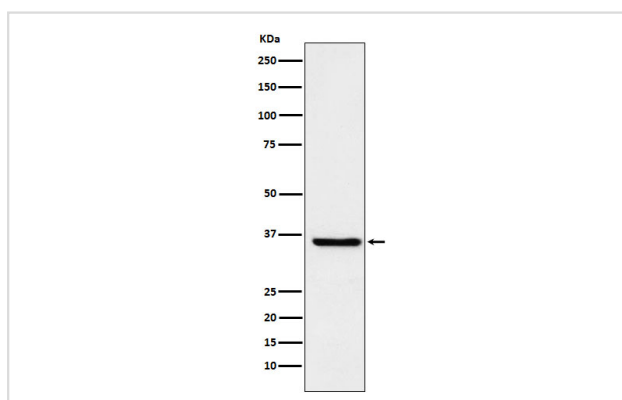
Description

Product Name	GSTO1 Rabbit mAb
Host Species	Rabbit
Clonality	Monoclonal
Isotype	Rabbit IgG
Purification	Affinity-chromatography
Applications	WB IHC ICC/IF
Species Reactivity	Human Rat
Specificity	GSTO1 Antibody detects endogenous levels of total GSTO1
Immunogen Description	A synthesized peptide derived from human GSTO1
Other Names	GSTO1 1; Gsto1; GSTTLp28; GSTX; Gtsttl; p28; SPG-R;
Accession No.	Uniprot:P78417
Uniprot	P78417
Calculated MW	28kDa
Formulation	Rabbit IgG in phosphate buffered saline , pH 7.4, 150mM NaCl, 0.02% sodium azide and 50% glycerol.
Storage	Store at +4Λ C short term. Store at -20Λ C long term. Avoid freeze / thaw cycle.

Application Details

WB:1:500~1:2000IHC:1:50~1:200ICC/IF:1:50~1:200

Images



Western blot analysis of glutathione S transferase Omega 1 expression in HepG2 cell lysate.

Product Description

Exhibits glutathione-dependent thiol transferase and dehydroascorbate reductase activities. Has S-(phenacyl)glutathione reductase activity. Has also glutathione S-transferase activity.

Note: This product is for in vitro research use only