

Integrin alpha 9 Rabbit mAb

Catalog No: #56438

Package Size: #56438-1 50ul #56438-2 100ul

Orders: order@signalwayantibody.com

Support: tech@signalwayantibody.com

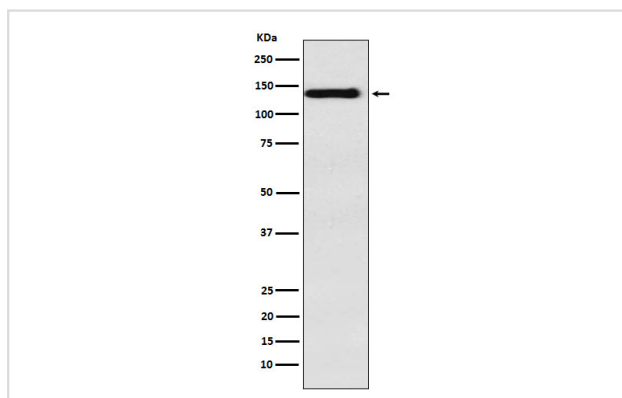
Description

| | |
|-----------------------|--|
| Product Name | Integrin alpha 9 Rabbit mAb |
| Host Species | Rabbit |
| Clonality | Monoclonal |
| Isotype | Rabbit IgG |
| Purification | Affinity-chromatography |
| Applications | WB IHC |
| Species Reactivity | Human Mouse Rat |
| Specificity | Integrin alpha 9 Antibody detects endogenous levels of total Integrin alpha 9 |
| Immunogen Description | A synthesized peptide derived from human Integrin alpha 9 |
| Other Names | Alpha RLC; ITGA4L; ITGA9; RLC; |
| Accession No. | Uniprot:Q13797 |
| Uniprot | Q13797 |
| Calculated MW | 140kDa |
| Formulation | Rabbit IgG in phosphate buffered saline , pH 7.4, 150mM NaCl, 0.02% sodium azide and 50% glycerol. |
| Storage | Store at +4 Λ C short term. Store at -20 Λ C long term. Avoid freeze / thaw cycle. |

Application Details

WB:1:500~1:2000IHC:1:50~1:200

Images



Western blot analysis of Integrin alpha 9 expression in HepG2 cell lysate.

Product Description

Integrin alpha-9/beta-1 is a receptor for VCAM1, cytotactin and osteopontin. It recognizes the sequence A-E-I-D-G-I-E-L in cytotactin.

Note: This product is for in vitro research use only