

PSMD4 Rabbit mAb

Catalog No: #56439

Package Size: #56439-1 50ul #56439-2 100ul

Orders: order@signalwayantibody.com

Support: tech@signalwayantibody.com

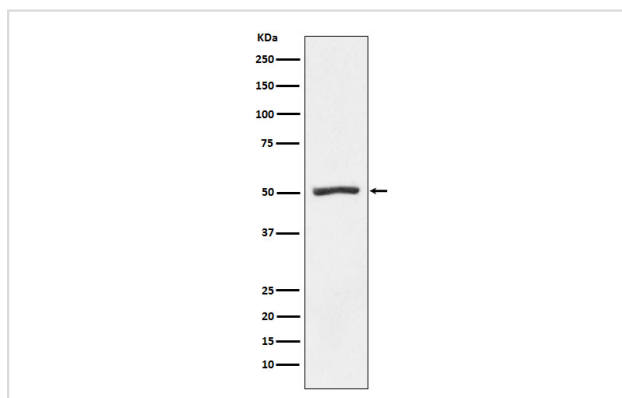
Description

Product Name	PSMD4 Rabbit mAb
Host Species	Rabbit
Clonality	Monoclonal
Isotype	Rabbit IgG
Purification	Affinity-chromatography
Applications	WB IP FC
Species Reactivity	Human Mouse Rat
Specificity	PSMD4 Antibody detects endogenous levels of total PSMD4
Immunogen Description	A synthesized peptide derived from human PSMD4
Other Names	PSMD4; AF; AF-1; ASF; MCB1; Rpn10; S5A; pUB-R5;
Accession No.	Uniprot:P55036
Uniprot	P55036
Calculated MW	50kDa
Formulation	Rabbit IgG in phosphate buffered saline , pH 7.4, 150mM NaCl, 0.02% sodium azide and 50% glycerol.
Storage	Store at +4Λ C short term. Store at -20Λ C long term. Avoid freeze / thaw cycle.

Application Details

WB:1:500~1:2000IP:1:50FC:1:100

Images



Western blot analysis of Proteasome 19S S5A expression in K562 cell lysate.

Product Description

Binds and presumably selects ubiquitin-conjugates for destruction. Displays selectivity for longer polyubiquitin chains. Modulates intestinal fluid secretion.

Note: This product is for in vitro research use only