

Dopamine Receptor D3 Rabbit mAb

Catalog No: #56440

Package Size: #56440-1 50ul #56440-2 100ul

Orders: order@signalwayantibody.com

Support: tech@signalwayantibody.com

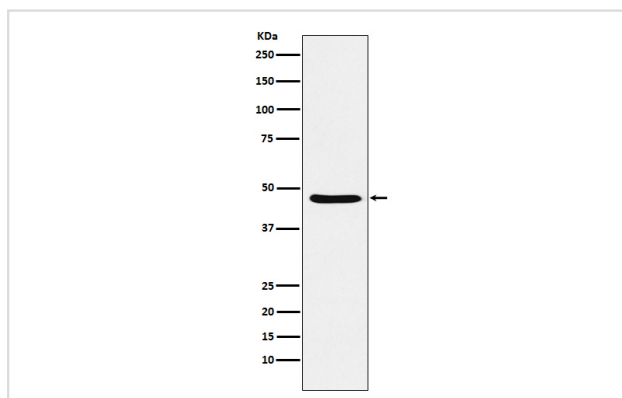
Description

Product Name	Dopamine Receptor D3 Rabbit mAb
Host Species	Rabbit
Clonality	Monoclonal
Isotype	Rabbit IgG
Purification	Affinity-chromatography
Applications	WB
Species Reactivity	Human Mouse Rat
Specificity	Dopamine Receptor D3 Antibody detects endogenous levels of total Dopamine Receptor D3
Immunogen Description	A synthesized peptide derived from human Dopamine Receptor D3
Other Names	D(3) dopamine receptor; Dopamine D3 receptor; DRD3; ETM1; FET1;
Accession No.	Uniprot:P35462
Uniprot	P35462
Calculated MW	44kDa
Formulation	Rabbit IgG in phosphate buffered saline , pH 7.4, 150mM NaCl, 0.02% sodium azide and 50% glycerol.
Storage	Store at +4 Λ C short term. Store at -20 Λ C long term. Avoid freeze / thaw cycle.

Application Details

WB: 1:500~1:2000

Images



Western blot analysis of Dopamine Receptor D3 expression in SH-SY5Y cell lysate.

Product Description

This is one of the five types (D1 to D5) of receptors for dopamine. The activity of this receptor is mediated by G proteins which inhibit adenylyl cyclase. Promotes cell proliferation.

Note: This product is for in vitro research use only