

## GABA A Receptor beta 1 Rabbit mAb

Catalog No: #56441

Package Size: #56441-1 50ul #56441-2 100ul

Orders: order@signalwayantibody.com

Support: tech@signalwayantibody.com

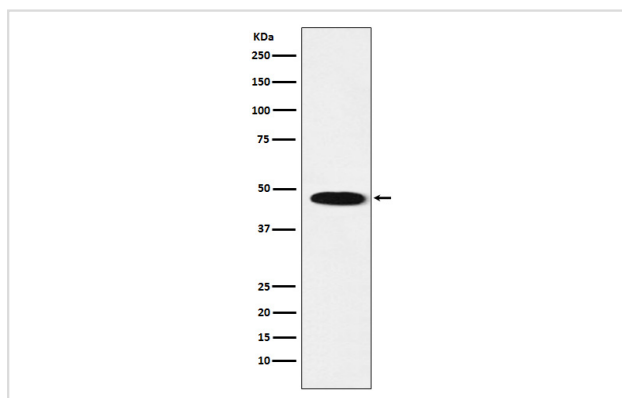
## Description

|                       |  |
|-----------------------|--|
| Product Name          | GABA A Receptor beta 1 Rabbit mAb  |
| Host Species          | Rabbit   |
| Clonality             | Monoclonal   |
| Isotype               | Rabbit IgG   |
| Purification          | Affinity-chromatography  |
| Applications          | WB   |
| Species Reactivity    | Human Mouse Rat  |
| Specificity           | GABA A Receptor beta 1 Antibody detects endogenous levels of total GABA A Receptor beta 1          |
| Immunogen Description | A synthesized peptide derived from human GABA A Receptor beta 1                                    |
| Other Names           | GABA-A receptor, beta-1 polypeptide; Gabrb-1; GABRB1; GARB1;                                       |
| Accession No.         | Uniprot:P18505   |
| Uniprot               | P18505   |
| Calculated MW         | 48kDa  |
| Formulation           | Rabbit IgG in phosphate buffered saline , pH 7.4, 150mM NaCl, 0.02% sodium azide and 50% glycerol. |
| Storage               | Store at +4Λ C short term. Store at -20Λ C long term. Avoid freeze / thaw cycle.                   |

## Application Details

WB: 1:500~1:2000

## Images



Western blot analysis of GABA A Receptor beta 1 expression in Human cerebellum lysate.

## Product Description

GABA, the major inhibitory neurotransmitter in the vertebrate brain, mediates neuronal inhibition by binding to the GABA/benzodiazepine receptor and opening an integral chloride channel.

---

Note: This product is for in vitro research use only