

GABA A Receptor beta 2 Rabbit mAb

Catalog No: #56443

Package Size: #56443-1 50ul #56443-2 100ul

Orders: order@signalwayantibody.com

Support: tech@signalwayantibody.com

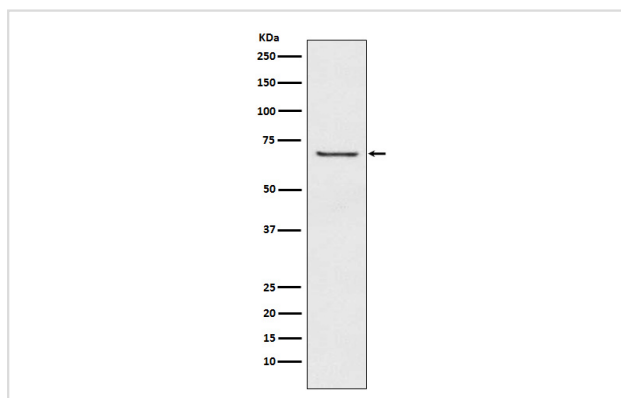
Description

| | |
|-----------------------|--|
| Product Name | GABA A Receptor beta 2 Rabbit mAb |
| Host Species | Rabbit |
| Clonality | Monoclonal |
| Isotype | Rabbit IgG |
| Purification | Affinity-chromatography |
| Applications | WB |
| Species Reactivity | Human Mouse Rat |
| Specificity | GABA A Receptor beta 2 Antibody detects endogenous levels of total GABA A Receptor beta 2 |
| Immunogen Description | A synthesized peptide derived from human GABA A Receptor beta 2 |
| Other Names | GABA; GABA(A) receptor beta 2; GABA(A) receptor subunit beta-2; GABRB2; |
| Accession No. | Uniprot:P47870 |
| Uniprot | P47870 |
| Calculated MW | 59kDa |
| Formulation | Rabbit IgG in phosphate buffered saline , pH 7.4, 150mM NaCl, 0.02% sodium azide and 50% glycerol. |
| Storage | Store at +4Λ C short term. Store at -20Λ C long term. Avoid freeze / thaw cycle. |

Application Details

WB: 1:500~1:2000

Images



Western blot analysis of GABA A Receptor beta 2 expression in A549 cell lysate.

Product Description

GABA, the major inhibitory neurotransmitter in the vertebrate brain, mediates neuronal inhibition by binding to the GABA/benzodiazepine receptor and opening an integral chloride channel.

Note: This product is for in vitro research use only