

## eIF2B epsilon Rabbit mAb

Catalog No: #56450

Package Size: #56450-1 50ul #56450-2 100ul

Orders: order@signalwayantibody.com

Support: tech@signalwayantibody.com

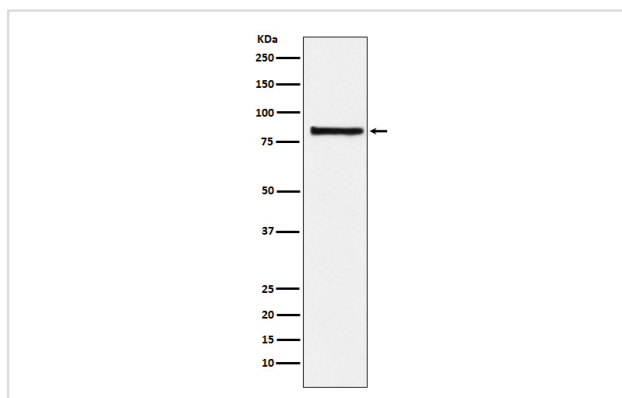
## Description

Product Name	eIF2B epsilon Rabbit mAb
Host Species	Rabbit
Clonality	Monoclonal
Isotype	Rabbit IgG
Purification	Affinity-chromatography
Applications	WB IHC ICC/IF
Species Reactivity	Human
Specificity	eIF2B epsilon Antibody detects endogenous levels of total eIF2B epsilon
Immunogen Description	A synthesized peptide derived from human eIF2B epsilon
Other Names	CACH; CLE; EIF 2B; EIF2B; EIF2B5; EIF2BE; EIF2Bepsilon;
Accession No.	Uniprot:Q13144
Uniprot	Q13144
Calculated MW	80kDa
Formulation	Rabbit IgG in phosphate buffered saline , pH 7.4, 150mM NaCl, 0.02% sodium azide and 50% glycerol.
Storage	Store at +4 $\Lambda$ C short term. Store at -20 $\Lambda$ C long term. Avoid freeze / thaw cycle.

## Application Details

WB:1:500~1:2000IHC:1:50~1:200ICC/IF:1:50~1:200

## Images



Western blot analysis of eIF2B epsilon expression in HeLa cell lysate.

## Product Description

Catalyzes the exchange of eukaryotic initiation factor 2-bound GDP for GTP.

---

Note: This product is for in vitro research use only