

P70 S6 Kinase alpha Rabbit mAb

Catalog No: #56451

Package Size: #56451-1 50ul #56451-2 100ul

Orders: order@signalwayantibody.com

Support: tech@signalwayantibody.com

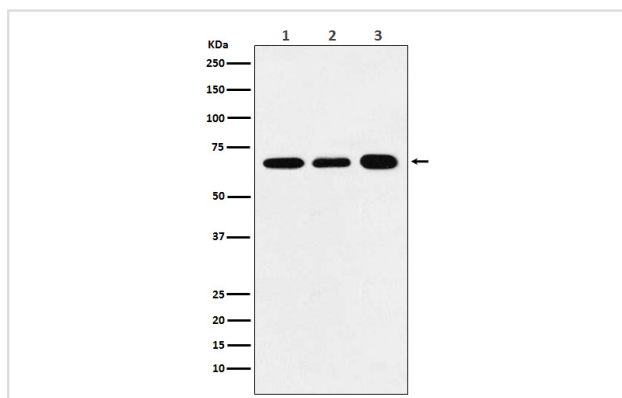
Description

Product Name	P70 S6 Kinase alpha Rabbit mAb
Host Species	Rabbit
Clonality	Monoclonal
Isotype	Rabbit IgG
Purification	Affinity-chromatography
Applications	WB IHC ICC/IF FC
Species Reactivity	Human Mouse Rat
Specificity	P70 S6 Kinase alpha Antibody detects endogenous levels of total P70 S6 Kinase alpha
Immunogen Description	A synthesized peptide derived from human P70 S6 Kinase alpha
Other Names	p70 alpha; P70 beta 1; p70 S6K; P70S6K; P70S6K1; p70S6Kb; PS6K; RPS6KB1; S6K; S6K1; STK14A;
Accession No.	Uniprot:P23443
Uniprot	P23443
Calculated MW	70kDa
Formulation	Rabbit IgG in phosphate buffered saline , pH 7.4, 150mM NaCl, 0.02% sodium azide and 50% glycerol.
Storage	Store at +4Λ C short term. Store at -20Λ C long term. Avoid freeze / thaw cycle.

Application Details

WB:1:500~1:1000IHC:1:50~1:200ICC/IF:1:50~1:200FC:1:200

Images



Western blot analysis of P70 S6 Kinase alpha expression in (1) HeLa cell lysate; (2) Raw264.7 cell lysate; (3) PC12 cell lysate.

Product Description

Acts to integrate nutrient and growth factor signals in regulation of protein synthesis, cell proliferation, cell growth, cell cycle progression and cell survival. Downstream effector of the mTOR signaling pathway.

Note: This product is for in vitro research use only