

RYBP Rabbit mAb

Catalog No: #56453

Package Size: #56453-1 50ul #56453-2 100ul

Orders: order@signalwayantibody.com

Support: tech@signalwayantibody.com

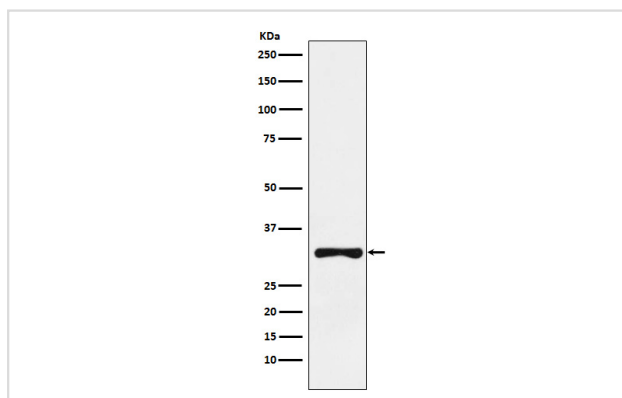
Description

Product Name	RYBP Rabbit mAb
Host Species	Rabbit
Clonality	Monoclonal
Isotype	Rabbit IgG
Purification	Affinity-chromatography
Applications	WB IHC ICC/IF IP FC
Species Reactivity	Human Mouse Rat
Specificity	RYBP Antibody detects endogenous levels of total RYBP
Immunogen Description	A synthesized peptide derived from human RYBP
Other Names	AAP1; APAP1; cb337; DEDAF; RYBP; rybpa; YEAF1;
Accession No.	Uniprot:Q8N488
Uniprot	Q8N488
Calculated MW	32kDa
Formulation	Rabbit IgG in phosphate buffered saline , pH 7.4, 150mM NaCl, 0.02% sodium azide and 50% glycerol.
Storage	Store at +4 Λ C short term. Store at -20 Λ C long term. Avoid freeze / thaw cycle.

Application Details

WB:1:500~1:2000IHC:1:50~1:200ICC/IF:1:50~1:200IP:1:50FC:1:50

Images



Western blot analysis of RYBP expression in SW480 cell lysate.

Product Description

May be implicated in the regulation of the transcription as a repressor of the transcriptional activity of E4TF1. In tumor cell lines, may induce apoptosis.

Note: This product is for in vitro research use only