

CoREST Rabbit mAb

Catalog No: #56454

Package Size: #56454-1 50ul #56454-2 100ul

Orders: order@signalwayantibody.com

Support: tech@signalwayantibody.com

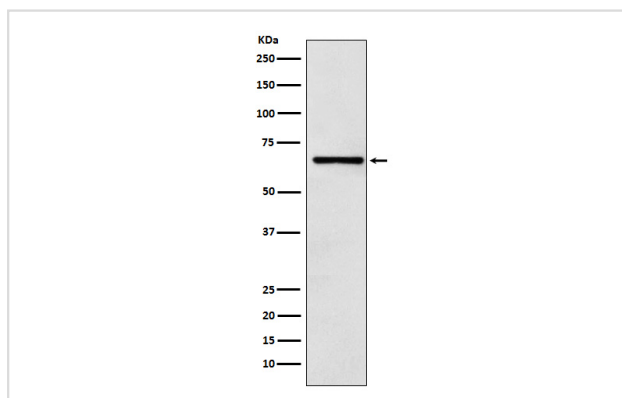
Description

Product Name	CoREST Rabbit mAb
Host Species	Rabbit
Clonality	Monoclonal
Isotype	Rabbit IgG
Purification	Affinity-chromatography
Applications	WB IHC ICC/IF
Species Reactivity	Human Mouse Rat
Specificity	CoREST Antibody detects endogenous levels of total CoREST
Immunogen Description	A synthesized peptide derived from human CoREST
Other Names	COREST; Nr2b2; RCOR; Rcor1; Rxrb;
Accession No.	Uniprot:Q9UKL0
Uniprot	Q9UKL0
Calculated MW	66kDa
Formulation	Rabbit IgG in phosphate buffered saline , pH 7.4, 150mM NaCl, 0.02% sodium azide and 50% glycerol.
Storage	Store at +4 Λ C short term. Store at -20 Λ C long term. Avoid freeze / thaw cycle.

Application Details

WB:1:1000~1:5000IHC:1:50~1:200ICC/IF:1:50~1:200

Images



Western blot analysis of CoREST expression in Molt-4 cell lysate.

Product Description

Essential component of the BHC complex, a corepressor complex that represses transcription of neuron-specific genes in non-neuronal cells. The BHC complex is recruited at RE1/NRSE sites by REST and acts by deacetylating and demethylating specific sites on histones, thereby acting as a chromatin modifier.

Note: This product is for in vitro research use only