

MC1 Receptor Rabbit mAb

Catalog No: #56457

Package Size: #56457-1 50ul #56457-2 100ul

Orders: order@signalwayantibody.com

Support: tech@signalwayantibody.com

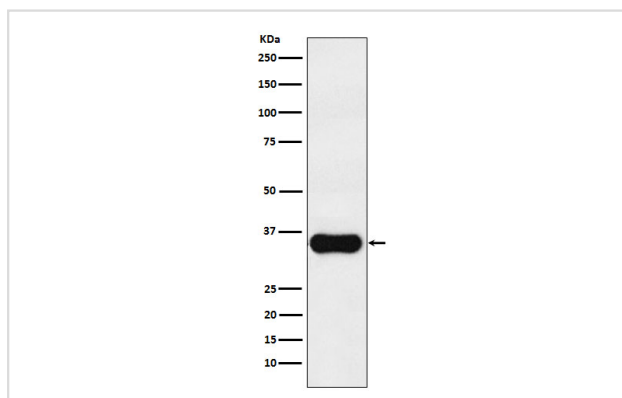
Description

Product Name	MC1 Receptor Rabbit mAb
Host Species	Rabbit
Clonality	Monoclonal
Isotype	Rabbit IgG
Purification	Affinity-chromatography
Applications	WB IHC
Species Reactivity	Human
Specificity	MC1 Receptor Antibody detects endogenous levels of total MC1 Receptor
Immunogen Description	A synthesized peptide derived from human MC1 Receptor
Other Names	CMM5; MC1R; MSHR; SHEP2;
Accession No.	Uniprot:Q01726
Uniprot	Q01726
Calculated MW	35kDa
Formulation	Rabbit IgG in phosphate buffered saline , pH 7.4, 150mM NaCl, 0.02% sodium azide and 50% glycerol.
Storage	Store at +4Λ C short term. Store at -20Λ C long term. Avoid freeze / thaw cycle.

Application Details

WB: 1:500~1:2000 IHC: 1:100~1:500

Images



Western blot analysis of MC1 Receptor expression in A375 cell lysate.

Product Description

Receptor for MSH (alpha, beta and gamma) and ACTH. The activity of this receptor is mediated by G proteins which activate adenylate cyclase.

Note: This product is for in vitro research use only