

## Eph receptor B1 Rabbit mAb

Catalog No: #56463

Package Size: #56463-1 50ul #56463-2 100ul

Orders: [order@signalwayantibody.com](mailto:order@signalwayantibody.com)Support: [tech@signalwayantibody.com](mailto:tech@signalwayantibody.com)

## Description

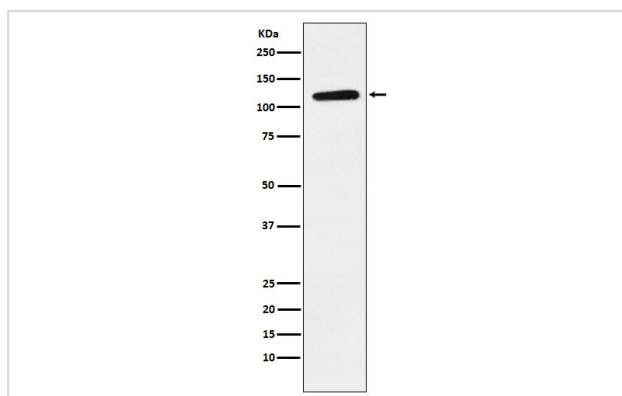
Product Name	Eph receptor B1 Rabbit mAb
Host Species	Rabbit
Clonality	Monoclonal
Isotype	Rabbit IgG
Purification	Affinity-chromatography
Applications	WB IP
Species Reactivity	Human Mouse Rat
Specificity	Eph receptor B1 Antibody detects endogenous levels of total Eph receptor B1
Immunogen Description	A synthesized peptide derived from human Eph receptor B1
Other Names	ELK; NET; Hek6; EPHT2; EPHB1;
Accession No.	Uniprot:P54762
Uniprot	P54762
Calculated MW	120kDa
Formulation	Rabbit IgG in phosphate buffered saline , pH 7.4, 150mM NaCl, 0.02% sodium azide and 50% glycerol.
Storage	Store at +4 $\Lambda$ C short term. Store at -20 $\Lambda$ C long term. Avoid freeze / thaw cycle.

## Application Details

WB: 1:500~1:2000

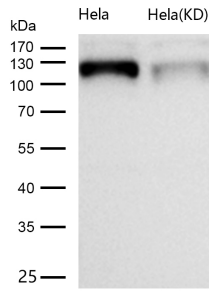
IP: 1:50

## Images



Western blot analysis of Eph receptor B1 expression in U87MG cell lysate.

All lanes use the Antibody at 1:1K dilution for 1 hour at room temperature.



## Product Description

Receptor for members of the ephrin-B family. Binds to ephrin-B1, -B2 and -B3. Binding with the guidance cue ephrin-B2 at the optic chiasm midline redirect ventrotemporal (VT) retinal ganglion cells (RGCs) axons ipsilaterally. May be involved in cell-cell interactions in the nervous system.

Note: This product is for in vitro research use only