

## Kininogen 1 Rabbit mAb

Catalog No: #56480

Package Size: #56480-1 50ul #56480-2 100ul

Orders: order@signalwayantibody.com

Support: tech@signalwayantibody.com

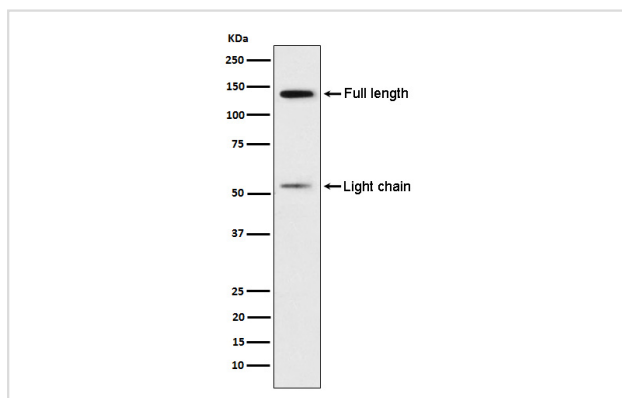
## Description

Product Name	Kininogen 1 Rabbit mAb
Host Species	Rabbit
Clonality	Monoclonal
Isotype	Rabbit IgG
Purification	Affinity-chromatography
Applications	WB IHC IP
Species Reactivity	Human
Specificity	Kininogen 1 Antibody detects endogenous levels of total Kininogen 1
Immunogen Description	A synthesized peptide derived from human Kininogen 1
Other Names	BDK; Bradykinin; HMWK; Kallidin I; Kallidin II; KNG; KNG1; WILLIAMS FACTOR;
Accession No.	Uniprot:P01042
Uniprot	P01042
Calculated MW	56,130kDa
Formulation	Rabbit IgG in phosphate buffered saline , pH 7.4, 150mM NaCl, 0.02% sodium azide and 50% glycerol.
Storage	Store at +4Λ C short term. Store at -20Λ C long term. Avoid freeze / thaw cycle.

## Application Details

WB:1:1000~1:5000IHC:1:50~1:200IP:1:50

## Images



Western blot analysis of Kininogen 1 expression in Human platelet lysate.

## Product Description

(1) Kininogens are inhibitors of thiol proteases; (2) HMW-kininogen plays an important role in blood coagulation by helping to position optimally prekallikrein and factor XI next to factor XII; (3) HMW-kininogen inhibits the thrombin- and plasmin-induced aggregation of thrombocytes;

---

Note: This product is for in vitro research use only