

## Brachyury Rabbit mAb

Catalog No: #56481

Package Size: #56481-1 50ul #56481-2 100ul

Orders: order@signalwayantibody.com

Support: tech@signalwayantibody.com

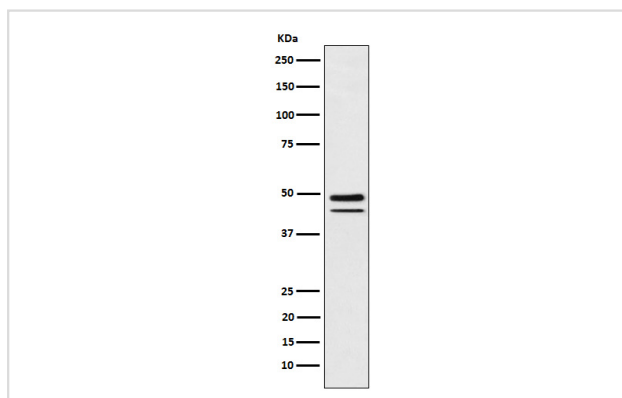
## Description

Product Name	Brachyury Rabbit mAb
Host Species	Rabbit
Clonality	Monoclonal
Isotype	Rabbit IgG
Purification	Affinity-chromatography
Applications	WB IHC ICC/IF IP FC
Species Reactivity	Mouse, Rat, Human
Specificity	Brachyury Antibody detects endogenous levels of total Brachyury
Immunogen Description	A synthesized peptide derived from human Brachyury
Other Names	Brachyury homolog; Bry; Protein T; SAVA; TFT; T-box transcription factor T; TBXT; Brachyury protein;
Accession No.	Uniprot:O15178
Uniprot	O15178
Calculated MW	47,41kDa
Formulation	Rabbit IgG in phosphate buffered saline , pH 7.4, 150mM NaCl, 0.02% sodium azide and 50% glycerol.
Storage	Store at +4Λ C short term. Store at -20Λ C long term. Avoid freeze / thaw cycle.

## Application Details

WB:1:500~1:2000IHC:1:100~1:500ICC/IF:1:100~1:500IP:1:100FC:1:100

## Images



Western blot analysis of Brachyury expression in MUG-Chor1 (human sacral bone chordoma) cell lysate.

## Product Description

Involved in the transcriptional regulation of genes required for mesoderm formation and differentiation. Binds to a palindromic site (called T site) and activates gene transcription when bound to such a site.

---

Note: This product is for in vitro research use only