

## Aminopeptidase A / CD249 Rabbit mAb

Catalog No: #56486

Package Size: #56486-1 50ul #56486-2 100ul

Orders: order@signalwayantibody.com

Support: tech@signalwayantibody.com

## Description

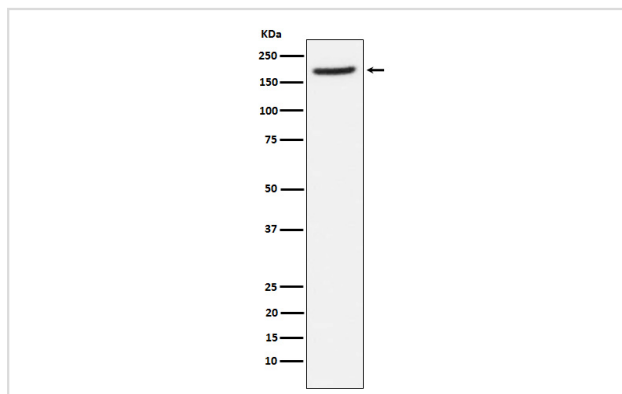
|                       |  |
|-----------------------|--|
| Product Name          | Aminopeptidase A / CD249 Rabbit mAb  |
| Host Species          | Rabbit   |
| Clonality             | Monoclonal   |
| Isotype               | Rabbit IgG   |
| Purification          | Affinity-chromatography  |
| Applications          | WB IHC   |
| Species Reactivity    | Human  |
| Specificity           | Aminopeptidase A / CD249 Antibody detects endogenous levels of total Aminopeptidase A / CD249      |
| Immunogen Description | A synthesized peptide derived from human Aminopeptidase A / CD249                                  |
| Other Names           | Aminopeptidase A; APA; bp1; CD249; EAP; Enpep; Gp160; Ly51;  |
| Accession No.         | Uniprot:Q07075   |
| Uniprot               | Q07075   |
| Calculated MW         | 160kDa   |
| Formulation           | Rabbit IgG in phosphate buffered saline , pH 7.4, 150mM NaCl, 0.02% sodium azide and 50% glycerol. |
| Storage               | Store at +4 $\Lambda$ C short term. Store at -20 $\Lambda$ C long term. Avoid freeze / thaw cycle. |

## Application Details

WB:1:1000~1:5000

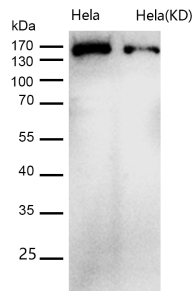
IHC:1:50~1:200

## Images



Western blot analysis of Aminopeptidase A / CD249 expression in human fetal lung lysate.

All lanes use the Antibody at 1:1K dilution for 1 hour at room temperature.



## Product Description

Appears to have a role in the catabolic pathway of the renin-angiotensin system. Probably plays a role in regulating growth and differentiation of early B-lineage cells.

Note: This product is for in vitro research use only