

## METTL3 Rabbit mAb

Catalog No: #56489

Package Size: #56489-1 50ul #56489-2 100ul

Orders: order@signalwayantibody.com

Support: tech@signalwayantibody.com

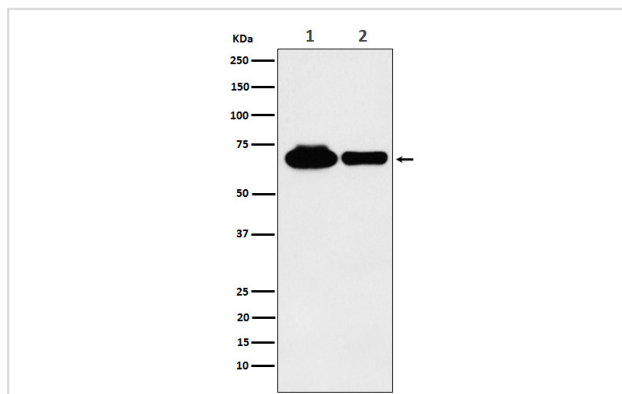
## Description

Product Name	METTL3 Rabbit mAb
Host Species	Rabbit
Clonality	Monoclonal
Isotype	Rabbit IgG
Purification	Affinity-chromatography
Applications	WB IHC ICC/IF IP FC
Species Reactivity	Human Mouse Rat
Specificity	METTL3 Antibody detects endogenous levels of total METTL3
Immunogen Description	A synthesized peptide derived from human METTL3
Other Names	IME4; M6A; Methyltransferase like protein 3; METTL3; MTA70; N6 adenosine methyltransferase 70 kDa subunit;
Accession No.	Uniprot:Q86U44
Uniprot	Q86U44
Calculated MW	70kDa
Formulation	Rabbit IgG in phosphate buffered saline , pH 7.4, 150mM NaCl, 0.02% sodium azide and 50% glycerol.
Storage	Store at +4 $\Lambda$ C short term. Store at -20 $\Lambda$ C long term. Avoid freeze / thaw cycle.

## Application Details

WB:1:500~1:2000IHC:1:50~1:200ICC/IF:1:50~1:200IP:1:50FC:1:50

## Images



Western blot analysis of METTL3 expression in (1) 293 cell lysate; (2) RAW 264.7 cell lysate.

## Product Description

N6-methyltransferase that methylates adenosine residues of some mRNAs. N6-methyladenosine (m6A), which is present at internal sites of some mRNAs, may play a role in the efficiency of mRNA splicing, transport or translation.

---

Note: This product is for in vitro research use only