

## MMP1 Rabbit mAb

Catalog No: #56490

Package Size: #56490-1 50ul #56490-2 100ul

Orders: order@signalwayantibody.com

Support: tech@signalwayantibody.com

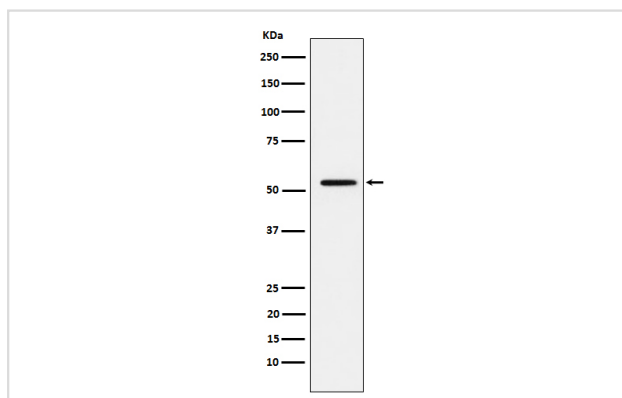
## Description

Product Name	MMP1 Rabbit mAb
Host Species	Rabbit
Clonality	Monoclonal
Isotype	Rabbit IgG
Purification	Affinity-chromatography
Applications	WB, IP
Species Reactivity	Human
Specificity	MMP1 Antibody detects endogenous levels of total MMP1
Immunogen Description	A synthesized peptide derived from human MMP1
Other Names	CLG; CLGN; MMP1;
Accession No.	Uniprot:P03956
Uniprot	P03956
Calculated MW	54 kDa
Formulation	Rabbit IgG in phosphate buffered saline , pH 7.4, 150mM NaCl, 0.02% sodium azide and 50% glycerol.
Storage	Store at +4Λ C short term. Store at -20Λ C long term. Avoid freeze / thaw cycle.

## Application Details

WB: 1:500~1:2000 IP: 1:50

## Images



Western blot analysis of MMP1 expression in A431 cell lysate.

## Product Description

Cleaves collagens of types I, II, and III at one site in the helical domain. Also cleaves collagens of types VII and X. In case of HIV infection, interacts and cleaves the secreted viral Tat protein, leading to a decrease in neuronal Tat's mediated neurotoxicity.

---

Note: This product is for in vitro research use only