

BMP6 Rabbit mAb

Catalog No: #56493

Package Size: #56493-1 50ul #56493-2 100ul

Orders: order@signalwayantibody.com

Support: tech@signalwayantibody.com

Description

Product Name	BMP6 Rabbit mAb
Host Species	Rabbit
Clonality	Monoclonal
Isotype	Rabbit IgG
Purification	Affinity-chromatography
Applications	WB IHC ICC/IF FC
Species Reactivity	Human Mouse Rat
Specificity	BMP6 Antibody detects endogenous levels of total BMP6
Immunogen Description	A synthesized peptide derived from human BMP6
Other Names	Bmp6; DVR6; VGR; VGR1;
Accession No.	Uniprot:P22004
Uniprot	P22004
Calculated MW	42kDa
Formulation	Rabbit IgG in phosphate buffered saline , pH 7.4, 150mM NaCl, 0.02% sodium azide and 50% glycerol.
Storage	Store at +4 Λ C short term. Store at -20 Λ C long term. Avoid freeze / thaw cycle.

Application Details

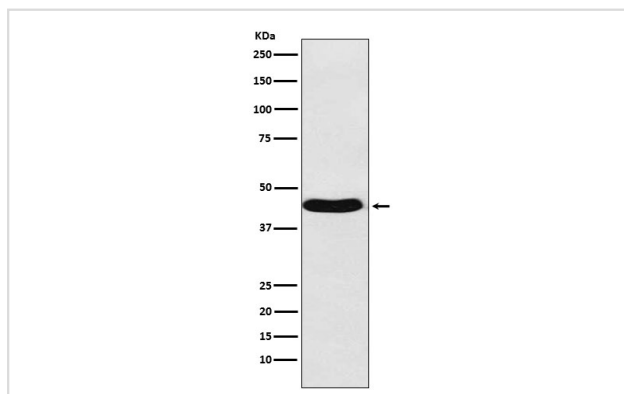
WB: 1:500~1:2000

IHC: 1:50~1:200

ICC/IF: 1:50~1:200

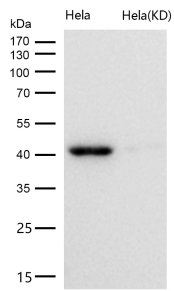
FC: 1:50

Images



Western blot analysis of BMP6 expression in Saos-2 cell lysate.

All lanes use the Antibody at 1:1K dilution for 1 hour at room temperature.



Product Description

Induces cartilage and bone formation.

Note: This product is for in vitro research use only