

ATAD2 Rabbit mAb

Catalog No: #56499

Package Size: #56499-1 50ul #56499-2 100ul

Orders: order@signalwayantibody.comSupport: tech@signalwayantibody.com

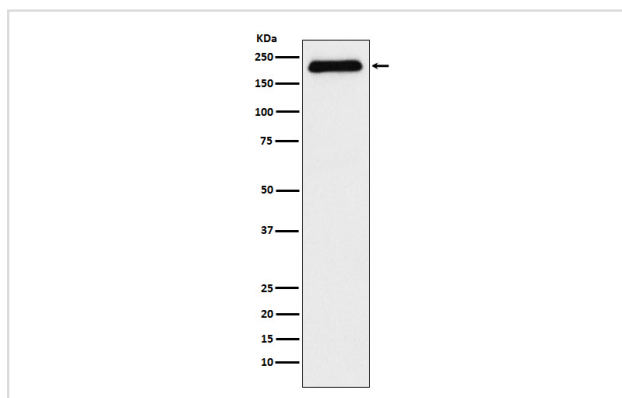
Description

Product Name	ATAD2 Rabbit mAb
Host Species	Rabbit
Clonality	Monoclonal
Isotype	Rabbit IgG
Purification	Affinity-chromatography
Applications	WB ICC/IF FC
Species Reactivity	Human
Specificity	ATAD2 Antibody detects endogenous levels of total ATAD2
Immunogen Description	A synthesized peptide derived from human ATAD2
Other Names	ANCCA; Atad2; CT137; L16; PRO2000;
Accession No.	Uniprot:Q6PL18
Uniprot	Q6PL18
Calculated MW	180kDa
Formulation	Rabbit IgG in phosphate buffered saline , pH 7.4, 150mM NaCl, 0.02% sodium azide and 50% glycerol.
Storage	Store at +4Λ C short term. Store at -20Λ C long term. Avoid freeze / thaw cycle.

Application Details

WB:1:500~1:2000 ICC/IF:1:50~1:200 FC:1:50

Images



Western blot analysis of ATAD2 expression in MCF-7 cell lysate.

Product Description

May be a transcriptional coactivator of the nuclear receptor ESR1 required to induce the expression of a subset of estradiol target genes, such as CCND1, MYC and E2F1. May play a role in the recruitment or occupancy of CREBBP at some ESR1 target gene promoters. May be required for histone hyperacetylation. Involved in the estrogen-induced cell proliferation and cell cycle progression of breast cancer cells.

Note: This product is for in vitro research use only