

PCB Rabbit mAb

Catalog No: #56500

Package Size: #56500-1 50ul #56500-2 100ul

Orders: order@signalwayantibody.com

Support: tech@signalwayantibody.com

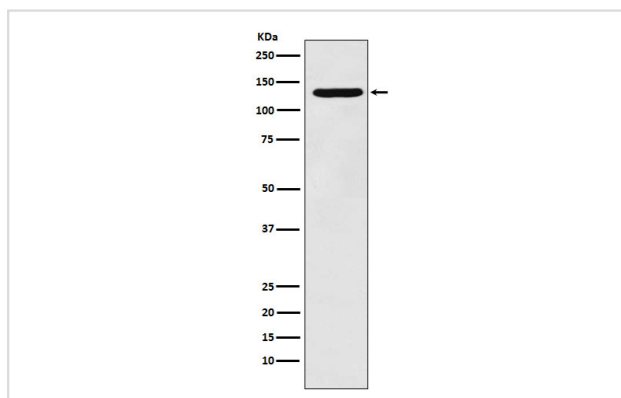
Description

Product Name	PCB Rabbit mAb
Host Species	Rabbit
Clonality	Monoclonal
Isotype	Rabbit IgG
Purification	Affinity-chromatography
Applications	WB ICC/IF
Species Reactivity	Human Mouse Rat
Specificity	PCB Antibody detects endogenous levels of total PCB
Immunogen Description	A synthesized peptide derived from human PCB
Other Names	PC; PCB; Pcx; Pyruvate carboxylase;
Accession No.	Uniprot:P11498
Uniprot	P11498
Calculated MW	130kDa
Formulation	Rabbit IgG in phosphate buffered saline , pH 7.4, 150mM NaCl, 0.02% sodium azide and 50% glycerol.
Storage	Store at +4Λ C short term. Store at -20Λ C long term. Avoid freeze / thaw cycle.

Application Details

WB: 1:500~1:2000 ICC/IF: 1:50~1:200

Images



Western blot analysis of PCB expression in HepG2 cell lysate.

Product Description

Pyruvate carboxylase catalyzes a 2-step reaction, involving the ATP-dependent carboxylation of the covalently attached biotin in the first step and the transfer of the carboxyl group to pyruvate in the second.

Note: This product is for in vitro research use only