

KA1 Rabbit mAb

Catalog No: #56501

Package Size: #56501-1 50ul #56501-2 100ul

Orders: order@signalwayantibody.com

Support: tech@signalwayantibody.com

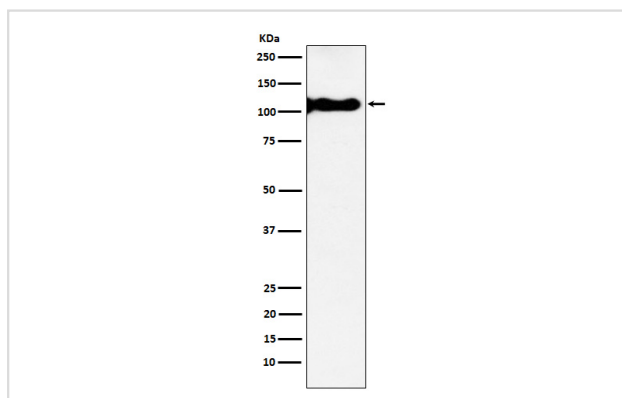
Description

Product Name	KA1 Rabbit mAb
Host Species	Rabbit
Clonality	Monoclonal
Isotype	Rabbit IgG
Purification	Affinity-chromatography
Applications	WB
Species Reactivity	Human Mouse Rat
Specificity	KA1 Antibody detects endogenous levels of total KA1
Immunogen Description	A synthesized peptide derived from human KA1
Other Names	EAA1; GluK4; GRIK; GriK4; KA1;
Accession No.	Uniprot:Q16099
Uniprot	Q16099
Calculated MW	107kDa
Formulation	Rabbit IgG in phosphate buffered saline , pH 7.4, 150mM NaCl, 0.02% sodium azide and 50% glycerol.
Storage	Store at +4Λ C short term. Store at -20Λ C long term. Avoid freeze / thaw cycle.

Application Details

WB: 1:500~1:1000

Images



Western blot analysis of KA1 expression in Human hippocampus lysate.

Product Description

Receptor for glutamate. L-glutamate acts as an excitatory neurotransmitter at many synapses in the central nervous system. The postsynaptic actions of Glu are mediated by a variety of receptors that are named according to their selective agonists.

Note: This product is for in vitro research use only