

RAB27A Rabbit mAb

Catalog No: #56505

Package Size: #56505-1 50ul #56505-2 100ul

Orders: order@signalwayantibody.com

Support: tech@signalwayantibody.com

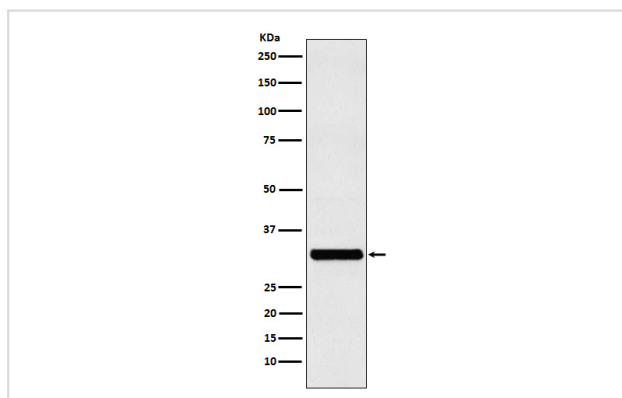
Description

Product Name	RAB27A Rabbit mAb
Host Species	Rabbit
Clonality	Monoclonal
Isotype	Rabbit IgG
Purification	Affinity-chromatography
Applications	WB ICC/IF IP FC
Species Reactivity	Human
Specificity	RAB27A Antibody detects endogenous levels of total RAB27A
Immunogen Description	A synthesized peptide derived from human RAB27A
Other Names	GS2; RAM; RAB27; HsT18676;
Accession No.	Uniprot:P51159
Uniprot	P51159
Calculated MW	28kDa
Formulation	Rabbit IgG in phosphate buffered saline , pH 7.4, 150mM NaCl, 0.02% sodium azide and 50% glycerol.
Storage	Store at +4 Λ C short term. Store at -20 Λ C long term. Avoid freeze / thaw cycle.

Application Details

WB:1:500~1:2000IC/IF:1:50~1:200IP:1:50FC:1:200

Images



Western blot analysis of RAB27A expression in MCF-7 cell lysate.

Product Description

Plays a role in cytotoxic granule exocytosis in lymphocytes. Required for both granule maturation and granule docking and priming at the immunologic synapse.

Note: This product is for in vitro research use only