

TRPC1 Rabbit mAb

Catalog No: #56509

Package Size: #56509-1 50ul #56509-2 100ul

Orders: order@signalwayantibody.com

Support: tech@signalwayantibody.com

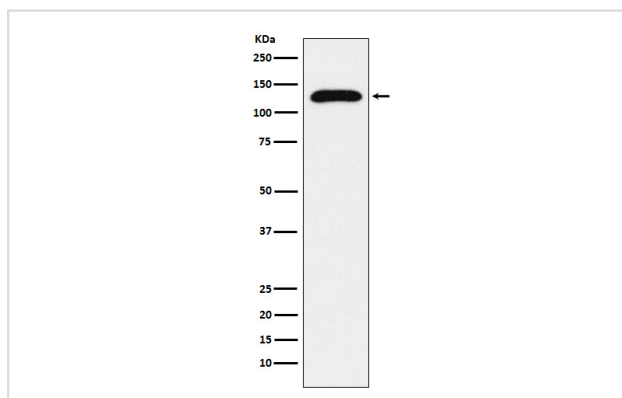
Description

Product Name	TRPC1 Rabbit mAb
Host Species	Rabbit
Clonality	Monoclonal
Isotype	Rabbit IgG
Purification	Affinity-chromatography
Applications	WB
Species Reactivity	Human Mouse Rat
Specificity	TRPC1 Antibody detects endogenous levels of total TRPC1
Immunogen Description	A synthesized peptide derived from human TRPC1
Other Names	HTRP1; Mtrp1; TRP1; TRPC1; Trrp1;
Accession No.	Uniprot:P48995
Uniprot	P48995
Calculated MW	120kDa
Formulation	Rabbit IgG in phosphate buffered saline , pH 7.4, 150mM NaCl, 0.02% sodium azide and 50% glycerol.
Storage	Store at +4Λ C short term. Store at -20Λ C long term. Avoid freeze / thaw cycle.

Application Details

WB: 1:500~1:2000

Images



Western blot analysis of TRPC1 expression in HepG2 cell lysate.

Product Description

Thought to form a receptor-activated non-selective calcium permeant cation channel. Probably is operated by a phosphatidylinositol second messenger system activated by receptor tyrosine kinases or G-protein coupled receptors. Seems to be also activated by intracellular calcium store depletion.

Note: This product is for in vitro research use only