

## Syntaxin Rabbit mAb

Catalog No: #56510

Package Size: #56510-1 50ul #56510-2 100ul

Orders: order@signalwayantibody.com

Support: tech@signalwayantibody.com

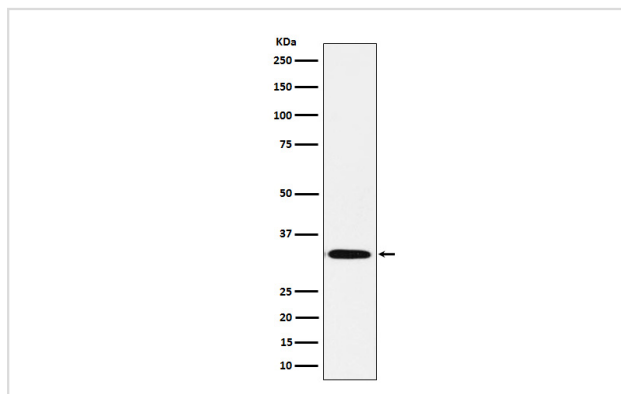
## Description

Product Name	Syntaxin Rabbit mAb
Host Species	Rabbit
Clonality	Monoclonal
Isotype	Rabbit IgG
Purification	Affinity-chromatography
Applications	WB IP
Species Reactivity	Human Mouse Rat
Specificity	Syntaxin Antibody detects endogenous levels of total Syntaxin
Immunogen Description	A synthesized peptide derived from human Syntaxin
Other Names	EPIM; Epimorphin; EPM; HPC 1; P35 1; STX1A; Stx1b; STX1B1; STX1B2; STX2; STX2A; STX2B; STX2C; STX3; STX3A;
Accession No.	Uniprot:P61266
Uniprot	P61266
Calculated MW	33kDa
Formulation	Rabbit IgG in phosphate buffered saline , pH 7.4, 150mM NaCl, 0.02% sodium azide and 50% glycerol.
Storage	Store at +4 $\Lambda$ C short term. Store at -20 $\Lambda$ C long term. Avoid freeze / thaw cycle.

## Application Details

WB:1:1000~1:5000IP:1:50

## Images



Western blot analysis of Syntaxin expression in Human fetal brain lysate.

## Product Description

Potentially involved in docking of synaptic vesicles at presynaptic active zones. May mediate Ca(2+)-regulation of exocytosis acrosomal reaction in sperm.

---

Note: This product is for in vitro research use only