

FOXL2 Rabbit mAb

Catalog No: #56512

Package Size: #56512-1 50ul #56512-2 100ul

Orders: order@signalwayantibody.com

Support: tech@signalwayantibody.com

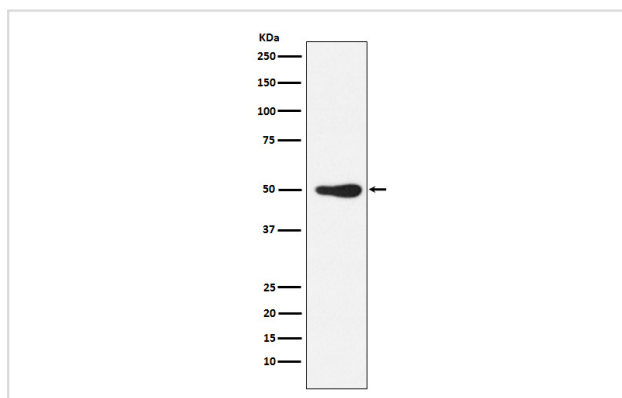
Description

Product Name	FOXL2 Rabbit mAb
Host Species	Rabbit
Clonality	Monoclonal
Isotype	Rabbit IgG
Purification	Affinity-chromatography
Applications	WB
Species Reactivity	Human
Specificity	FOXL2 Antibody detects endogenous levels of total FOXL2
Immunogen Description	A synthesized peptide derived from human FOXL2
Other Names	BPES; BPES1; FOXL2; PFRK; PINTO; POF3;
Accession No.	Uniprot:P58012
Uniprot	P58012
Calculated MW	50kDa
Formulation	Rabbit IgG in phosphate buffered saline , pH 7.4, 150mM NaCl, 0.02% sodium azide and 50% glycerol.
Storage	Store at +4 Λ C short term. Store at -20 Λ C long term. Avoid freeze / thaw cycle.

Application Details

WB: 1:500~1:2000

Images



Western blot analysis of FOXL2 expression in Jurkat cell lysate.

Product Description

Transcriptional regulator. Critical factor essential for ovary differentiation and maintenance, and repression of the genetic program for somatic testis determination. Prevents trans-differentiation of ovary to testis through transcriptional repression of the Sertoli cell-promoting gene SOX9 (By similarity).

Note: This product is for in vitro research use only