

NDUFAF1 Rabbit mAb

Catalog No: #56522

Package Size: #56522-1 50ul #56522-2 100ul

Orders: order@signalwayantibody.com

Support: tech@signalwayantibody.com

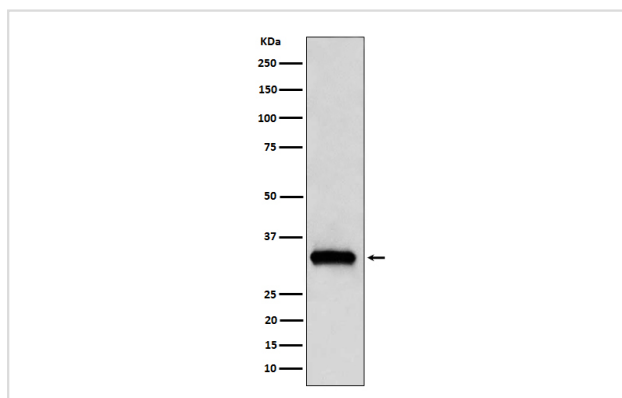
Description

Product Name	NDUFAF1 Rabbit mAb
Host Species	Rabbit
Clonality	Monoclonal
Isotype	Rabbit IgG
Purification	Affinity-chromatography
Applications	WB IHC ICC/IF IP FC
Species Reactivity	Human
Specificity	NDUFAF1 Antibody detects endogenous levels of total NDUFAF1
Immunogen Description	A synthesized peptide derived from human NDUFAF1
Other Names	CGI65; CIA30; Ndufaf1;
Accession No.	Uniprot:Q9Y375
Uniprot	Q9Y375
Calculated MW	33kDa
Formulation	Rabbit IgG in phosphate buffered saline , pH 7.4, 150mM NaCl, 0.02% sodium azide and 50% glycerol.
Storage	Store at +4 Λ C short term. Store at -20 Λ C long term. Avoid freeze / thaw cycle.

Application Details

WB:1:500~1:2000IHC:1:50~1:200ICC/IF:1:50~1:200IP:1:50FC:1:50

Images



Western blot analysis of NDUFAF1 expression in 293T cell lysate.

Product Description

Chaperone protein involved in the assembly of the mitochondrial NADH:ubiquinone oxidoreductase complex (complex I).

Note: This product is for in vitro research use only