

GSTK1 Rabbit mAb

Catalog No: #56526

Package Size: #56526-1 50ul #56526-2 100ul

Orders: order@signalwayantibody.com

Support: tech@signalwayantibody.com

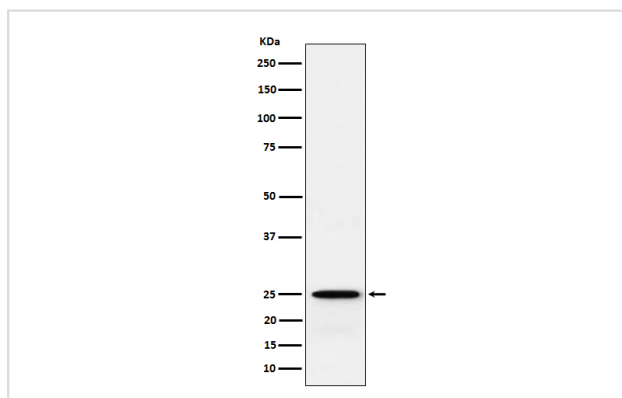
Description

| | |
|-----------------------|--|
| Product Name | GSTK1 Rabbit mAb |
| Host Species | Rabbit |
| Clonality | Monoclonal |
| Isotype | Rabbit IgG |
| Purification | Affinity-chromatography |
| Applications | WB IHC ICC/IF IP FC |
| Species Reactivity | Human |
| Specificity | GSTK1 Antibody detects endogenous levels of total GSTK1 |
| Immunogen Description | A synthesized peptide derived from human GSTK1 |
| Other Names | GST; GST class kappa; GST13; Gstk1; hGSTK1; |
| Accession No. | Uniprot:Q9Y2Q3 |
| Uniprot | Q9Y2Q3 |
| Calculated MW | 25 kDa |
| Formulation | Rabbit IgG in phosphate buffered saline , pH 7.4, 150mM NaCl, 0.02% sodium azide and 50% glycerol. |
| Storage | Store at +4Λ C short term. Store at -20Λ C long term. Avoid freeze / thaw cycle. |

Application Details

WB:1:500~1:2000IHC:1:50~1:200ICC/IF:1:50~1:200IP:1:50FC:1:50

Images



Western blot analysis of GSTK1 expression in 293T cell lysate.

Product Description

Significant glutathione conjugating activity is found only with the model substrate, 1-chloro-2,4-dinitrobenzene (CDNB).

Note: This product is for in vitro research use only