

## Placental Protein 14 / PAEP Rabbit mAb

Catalog No: #56529

Package Size: #56529-1 50ul #56529-2 100ul

Orders: order@signalwayantibody.com

Support: tech@signalwayantibody.com

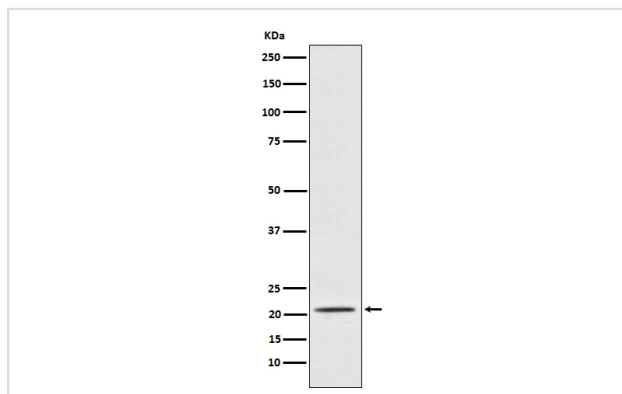
## Description

Product Name	Placental Protein 14 / PAEP Rabbit mAb
Host Species	Rabbit
Clonality	Monoclonal
Isotype	Rabbit IgG
Purification	Affinity-chromatography
Applications	WB
Species Reactivity	Human
Specificity	Placental Protein 14 / PAEP Antibody detects endogenous levels of total Placental Protein 14 / PAEP
Immunogen Description	A synthesized peptide derived from human Placental Protein 14 / PAEP
Other Names	GdA; GdF; GdS; Glycodelin A; Glycodelin; Glycodelin F; Glycodelin S; PAEG; PAEP; PEG; PEP; Placental protein 14; PP14;
Accession No.	Uniprot:P09466
Uniprot	P09466
Calculated MW	24 kDa
Formulation	Rabbit IgG in phosphate buffered saline , pH 7.4, 150mM NaCl, 0.02% sodium azide and 50% glycerol.
Storage	Store at +4 $\Lambda$ C short term. Store at -20 $\Lambda$ C long term. Avoid freeze / thaw cycle.

## Application Details

WB:1:500~1:2000

## Images



Western blot analysis of Placental Protein 14 / PAEP expression in TPA-treated K562 cell lysate.

## Product Description

This protein is, quantitatively, the main protein synthesized and secreted in the endometrium from mid-luteal phase of the menstrual cycle and during the first semester of pregnancy.

---

Note: This product is for in vitro research use only