

BAG2 Rabbit mAb

Catalog No: #56530

Package Size: #56530-1 50ul #56530-2 100ul

Orders: order@signalwayantibody.com

Support: tech@signalwayantibody.com

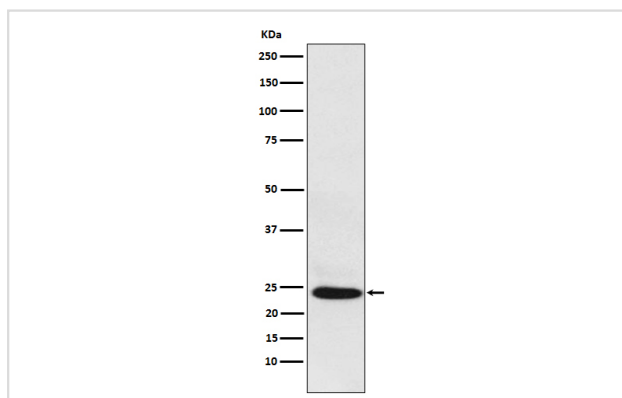
Description

Product Name	BAG2 Rabbit mAb
Host Species	Rabbit
Clonality	Monoclonal
Isotype	Rabbit IgG
Purification	Affinity-chromatography
Applications	WB IP IHC ICC FC
Species Reactivity	Human
Specificity	BAG2 Antibody detects endogenous levels of total BAG2
Immunogen Description	A synthesized peptide derived from human BAG2
Other Names	Bag2;
Accession No.	Uniprot:O95816
Uniprot	O95816
Calculated MW	24 kDa
Formulation	Rabbit IgG in phosphate buffered saline , pH 7.4, 150mM NaCl, 0.02% sodium azide and 50% glycerol.
Storage	Store at +4 Λ C short term. Store at -20 Λ C long term. Avoid freeze / thaw cycle.

Application Details

WB:1:500~1:2000IHC:1:50~1:200ICC/IF:1:50~1:200IP:1:50FC:1:50

Images



Western blot analysis of BAG2 expression in HepG2 cell lysate.

Product Description

Inhibits the chaperone activity of HSP70/HSC70 by promoting substrate release.

Note: This product is for in vitro research use only