

Otx2 Rabbit mAb

Catalog No: #56534

Package Size: #56534-1 50ul #56534-2 100ul

Orders: order@signalwayantibody.com

Support: tech@signalwayantibody.com

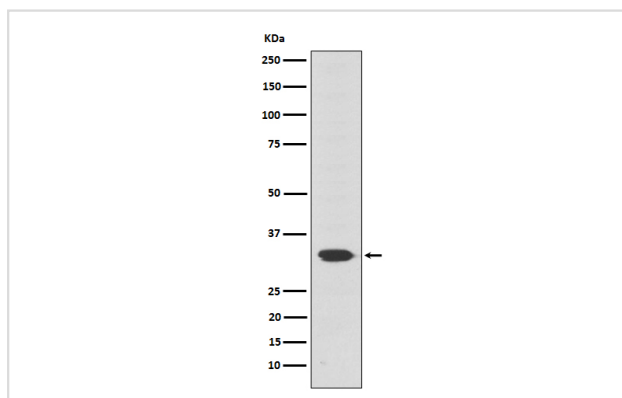
Description

Product Name	Otx2 Rabbit mAb
Host Species	Rabbit
Clonality	Monoclonal
Isotype	Rabbit IgG
Purification	Affinity-chromatography
Applications	WB
Species Reactivity	Human
Specificity	Otx2 Antibody detects endogenous levels of total Otx2
Immunogen Description	A synthesized peptide derived from human Otx2
Other Names	CPHD6; MCOPS5; Orthodenticle 2; otx2;
Accession No.	Uniprot:P32243
Uniprot	P32243
Calculated MW	32 kDa
Formulation	Rabbit IgG in phosphate buffered saline , pH 7.4, 150mM NaCl, 0.02% sodium azide and 50% glycerol.
Storage	Store at +4Λ C short term. Store at -20Λ C long term. Avoid freeze / thaw cycle.

Application Details

WB: 1:500~1:2000

Images



Western blot analysis of Otx2 expression in Y79 cell lysate.

Product Description

Probably plays a role in the development of the brain and the sense organs. Can bind to the BCD target sequence (BTS): 5'-TCTAATCCC-3'.

Note: This product is for in vitro research use only