

SAA4 Rabbit mAb

Catalog No: #56536

Package Size: #56536-1 50ul #56536-2 100ul

Orders: order@signalwayantibody.com

Support: tech@signalwayantibody.com

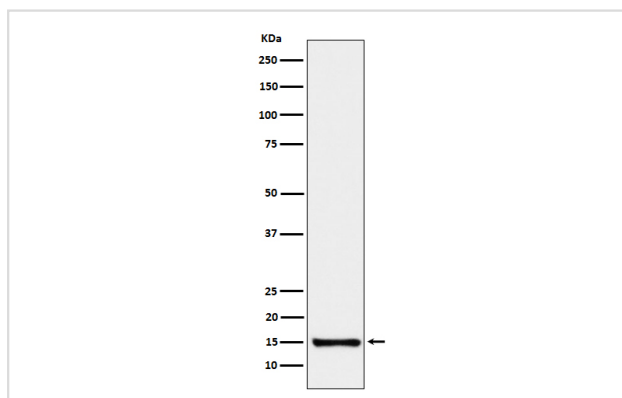
Description

Product Name	SAA4 Rabbit mAb
Host Species	Rabbit
Clonality	Monoclonal
Isotype	Rabbit IgG
Purification	Affinity-chromatography
Applications	WB IHC ICC FC
Species Reactivity	Human
Specificity	SAA4 Antibody detects endogenous levels of total SAA4
Immunogen Description	A synthesized peptide derived from human SAA4
Other Names	CSAA; Saa4;
Accession No.	Uniprot:P35542
Uniprot	P35542
Calculated MW	15 kDa
Formulation	Rabbit IgG in phosphate buffered saline , pH 7.4, 150mM NaCl, 0.02% sodium azide and 50% glycerol.
Storage	Store at +4Λ C short term. Store at -20Λ C long term. Avoid freeze / thaw cycle.

Application Details

WB:1:500~1:2000IHC:1:50~1:200ICC/IF:1:50~1:200FC:1:50

Images



Western blot analysis of SAA4 expression in Human plasma cell lysate.

Product Description

Major acute phase reactant. Apolipoprotein of the HDL complex.

Note: This product is for in vitro research use only