

CEND1 Rabbit mAb

Catalog No: #56540

Package Size: #56540-1 50ul #56540-2 100ul

Orders: order@signalwayantibody.com

Support: tech@signalwayantibody.com

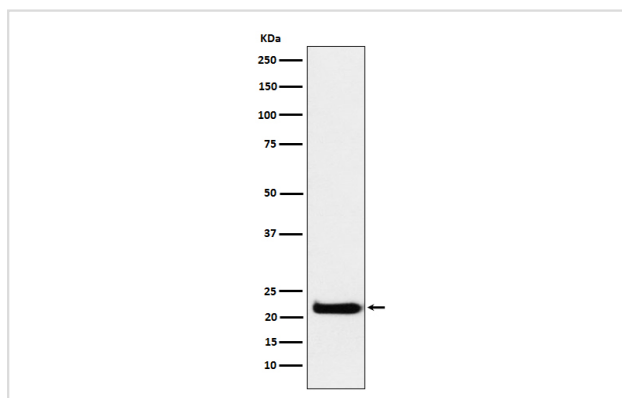
Description

Product Name	CEND1 Rabbit mAb
Host Species	Rabbit
Clonality	Monoclonal
Isotype	Rabbit IgG
Purification	Affinity-chromatography
Applications	WB IHC ICC IP
Species Reactivity	Human Mouse Rat
Specificity	CEND1 Antibody detects endogenous levels of total CEND1
Immunogen Description	A synthesized peptide derived from human CEND1
Other Names	BM88;
Accession No.	Uniprot:Q8N111
Uniprot	Q8N111
Calculated MW	22kDa
Formulation	Rabbit IgG in phosphate buffered saline , pH 7.4, 150mM NaCl, 0.02% sodium azide and 50% glycerol.
Storage	Store at +4 Λ C short term. Store at -20 Λ C long term. Avoid freeze / thaw cycle.

Application Details

WB:1:500~1:2000IHC:1:50~1:200ICC/IF:1:50~1:200IP:1:50

Images



Western blot analysis of CEND1 expression in U-87 MG cell lysate.

Product Description

CEND1 is a neuron-specific protein. The similar protein in pig enhances neuroblastoma cell differentiation in vitro and may be involved in neuronal differentiation in vivo. Multiple pseudogenes have been reported for this gene

Note: This product is for in vitro research use only