

HSF2 Rabbit mAb

Catalog No: #56542

Package Size: #56542-1 50ul #56542-2 100ul

Orders: order@signalwayantibody.com

Support: tech@signalwayantibody.com

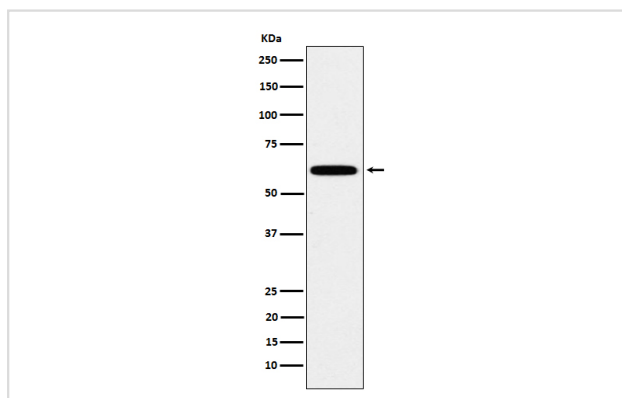
Description

Product Name	HSF2 Rabbit mAb
Host Species	Rabbit
Clonality	Monoclonal
Isotype	Rabbit IgG
Purification	Affinity-chromatography
Applications	WB ICC/IF FC
Species Reactivity	Human
Specificity	HSF2 Antibody detects endogenous levels of total HSF2
Immunogen Description	A synthesized peptide derived from human HSF2
Other Names	Heat shock factor protein 2; HSF2; HSTF 2;
Accession No.	Uniprot:Q03933
Uniprot	Q03933
Calculated MW	60 kDa
Formulation	Rabbit IgG in phosphate buffered saline , pH 7.4, 150mM NaCl, 0.02% sodium azide and 50% glycerol.
Storage	Store at +4Λ C short term. Store at -20Λ C long term. Avoid freeze / thaw cycle.

Application Details

WB:1:500~1:2000ICC/IF:1:50~1:200FC:1:50

Images



Western blot analysis of HSF2 expression in HeLa cell lysate.

Product Description

DNA-binding protein that specifically binds heat shock promoter elements (HSE) and activates transcription. In higher eukaryotes, HSF is unable to bind to the HSE unless the cells are heat shocked.

Note: This product is for in vitro research use only