

## Plastin L Rabbit mAb

Catalog No: #56548

Package Size: #56548-1 50ul #56548-2 100ul

Orders: order@signalwayantibody.com

Support: tech@signalwayantibody.com

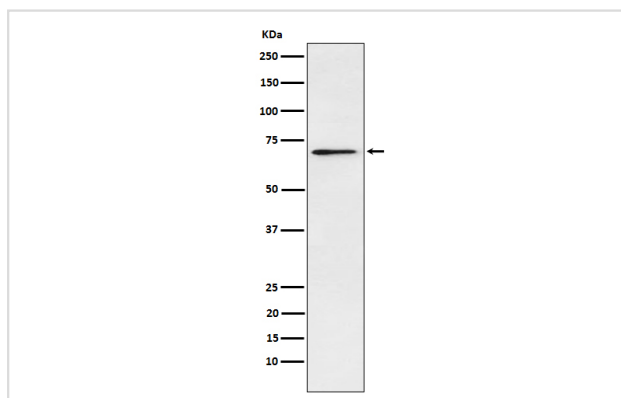
## Description

Product Name	Plastin L Rabbit mAb
Host Species	Rabbit
Clonality	Monoclonal
Isotype	Rabbit IgG
Purification	Affinity-chromatography
Applications	WB IHC ICC IP FC
Species Reactivity	Human
Specificity	Plastin L Antibody detects endogenous levels of total Plastin L
Immunogen Description	A synthesized peptide derived from human Plastin L
Other Names	CP64; L plastin; LC64P; LCP1; LPL; Lplastin; Plastin 2; PLS2;
Accession No.	Uniprot:P13796
Uniprot	P13796
Calculated MW	70 kDa
Formulation	Rabbit IgG in phosphate buffered saline , pH 7.4, 150mM NaCl, 0.02% sodium azide and 50% glycerol.
Storage	Store at +4 $\Lambda$ C short term. Store at -20 $\Lambda$ C long term. Avoid freeze / thaw cycle.

## Application Details

WB:1:500~1:2000IHC:1:50~1:200ICC/IF:1:50~1:200IP:1:50FC:1:50

## Images



Western blot analysis of Plastin L expression in Jurkat cell lysate.

## Product Description

Actin-binding protein. Plays a role in the activation of T-cells in response to costimulation through TCR/CD3 and CD2 or CD28. Modulates the cell surface expression of IL2RA/CD25 and CD69.

---

Note: This product is for in vitro research use only