

## GPA33 Rabbit mAb

Catalog No: #56551

Package Size: #56551-1 50ul #56551-2 100ul

Orders: order@signalwayantibody.com

Support: tech@signalwayantibody.com

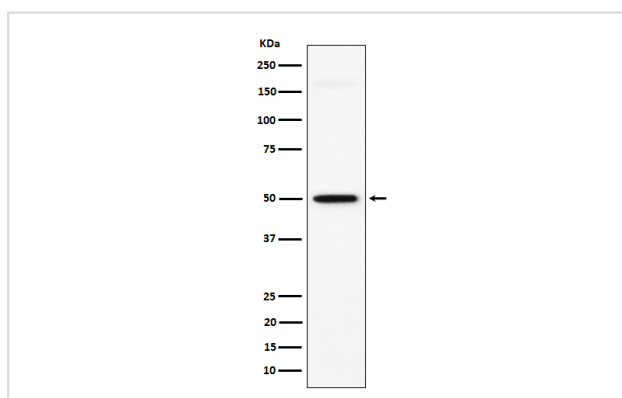
## Description

Product Name	GPA33 Rabbit mAb
Host Species	Rabbit
Clonality	Monoclonal
Isotype	Rabbit IgG
Purification	Affinity-chromatography
Applications	WB IHC IP
Species Reactivity	Human
Specificity	GPA33 Antibody detects endogenous levels of total GPA33
Immunogen Description	A synthesized peptide derived from human GPA33
Other Names	Cell surface A33 antigen; Gpa33;
Accession No.	Uniprot:Q99795
Uniprot	Q99795
Calculated MW	50kDa
Formulation	Rabbit IgG in phosphate buffered saline , pH 7.4, 150mM NaCl, 0.02% sodium azide and 50% glycerol.
Storage	Store at +4 $\Lambda$ C short term. Store at -20 $\Lambda$ C long term. Avoid freeze / thaw cycle.

## Application Details

WB:1:500~1:2000IHC:1:50~1:200IP:1:50

## Images



Western blot analysis of GPA33 expression in HT-29 cell lysate.

## Product Description

May play a role in cell-cell recognition and signaling.

---

Note: This product is for in vitro research use only