

Dkk3 Rabbit mAb

Catalog No: #56555

Package Size: #56555-1 50ul #56555-2 100ul

Orders: order@signalwayantibody.com

Support: tech@signalwayantibody.com

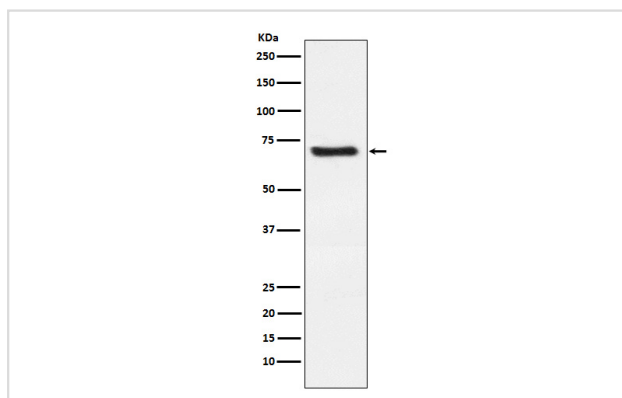
Description

Product Name	Dkk3 Rabbit mAb
Host Species	Rabbit
Clonality	Monoclonal
Isotype	Rabbit IgG
Purification	Affinity-chromatography
Applications	WB ICC/IF IP
Species Reactivity	Human Mouse Rat
Specificity	Dkk3 Antibody detects endogenous levels of total Dkk3
Immunogen Description	A synthesized peptide derived from human Dkk3
Other Names	RIG; REIC;
Accession No.	Uniprot:Q9UBP4
Uniprot	Q9UBP4
Calculated MW	60kDa
Formulation	Rabbit IgG in phosphate buffered saline , pH 7.4, 150mM NaCl, 0.02% sodium azide and 50% glycerol.
Storage	Store at +4Λ C short term. Store at -20Λ C long term. Avoid freeze / thaw cycle.

Application Details

WB: 1:500~1:2000 ICC/IF: 1:50~1:200 IP: 1:50

Images



Western blot analysis of Dkk3 expression in Human fetal kidney lysate.

Product Description

Antagonizes canonical Wnt signaling by inhibiting LRP5/6 interaction with Wnt and by forming a ternary complex with the transmembrane protein KREMEN that promotes internalization of LRP5/6.

Note: This product is for in vitro research use only