

ODC1 Rabbit mAb

Catalog No: #56559

Package Size: #56559-1 50ul #56559-2 100ul

Orders: order@signalwayantibody.com

Support: tech@signalwayantibody.com

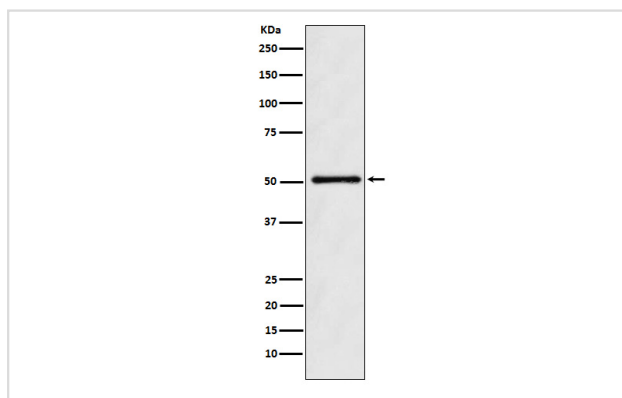
Description

Product Name	ODC1 Rabbit mAb
Host Species	Rabbit
Clonality	Monoclonal
Isotype	Rabbit IgG
Purification	Affinity-chromatography
Applications	WB
Species Reactivity	Human Mouse Rat
Specificity	Ornithine Decarboxylase Antibody detects endogenous levels of total Ornithine Decarboxylase
Immunogen Description	A synthesized peptide derived from human Ornithine Decarboxylase
Other Names	Dodc1; ODC; Odc1; ODC2; RNODC;
Accession No.	Uniprot:P11926
Uniprot	P11926
Calculated MW	51kDa
Formulation	Rabbit IgG in phosphate buffered saline , pH 7.4, 150mM NaCl, 0.02% sodium azide and 50% glycerol.
Storage	Store at +4Λ C short term. Store at -20Λ C long term. Avoid freeze / thaw cycle.

Application Details

WB: 1:500~1:2000

Images



Western blot analysis of ODC1 expression in K562 cell lysate.

Product Description

Amine and polyamine biosynthesis; putrescine biosynthesis via L-ornithine pathway; putrescine from L-ornithine: step 1/1.

Note: This product is for in vitro research use only