

Epac2 Rabbit mAb

Catalog No: #56564

Package Size: #56564-1 50ul #56564-2 100ul

Orders: order@signalwayantibody.com

Support: tech@signalwayantibody.com

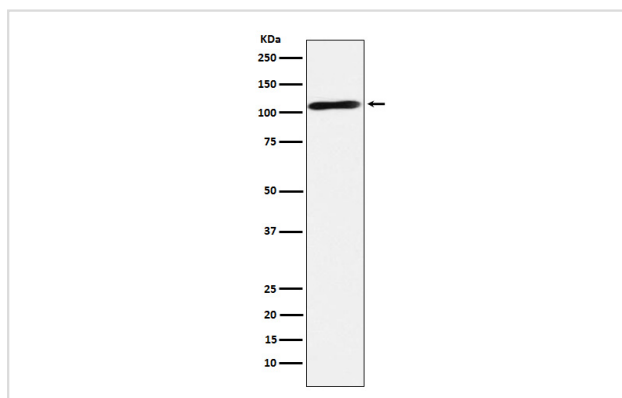
Description

Product Name	Epac2 Rabbit mAb
Host Species	Rabbit
Clonality	Monoclonal
Isotype	Rabbit IgG
Purification	Affinity-chromatography
Applications	WB
Species Reactivity	Human Mouse Rat
Specificity	Epac2 Antibody detects endogenous levels of total Epac2
Immunogen Description	A synthesized peptide derived from human Epac2
Other Names	CAMP GEFII; CAMPGEFII; CGEF2; EPAC2; Rapgef4;
Accession No.	Uniprot:Q8WZA2
Uniprot	Q8WZA2
Calculated MW	116kDa
Formulation	Rabbit IgG in phosphate buffered saline , pH 7.4, 150mM NaCl, 0.02% sodium azide and 50% glycerol.
Storage	Store at +4 Λ C short term. Store at -20 Λ C long term. Avoid freeze / thaw cycle.

Application Details

WB: 1:500~1:2000

Images



Western blot analysis of Epac2 expression in Human fetal brain lysate.

Product Description

Guanine nucleotide exchange factor (GEF) for RAP1A, RAP1B and RAP2A small GTPases that is activated by binding cAMP. Seems not to activate RAB3A. Involved in cAMP-dependent, PKA-independent exocytosis through interaction with RIMS2.

Note: This product is for in vitro research use only